

Inverter Maintenance Communication Application

PCM002Z

Instruction Manual

TOSHIBA INDUSTRIAL PRODUCTS AND SYSTEMS CORPORATION

Technical information described in this document is used to explain typical operations and applications of products, and this is not intended to grant warranty or licensing right on its use regarding TOSHIBA group or a third party intellectual property and other right.

- Contents -

1. Introduction	3
2. Installation procedure	5
2.1. Installation	5
2.1.1. Drive data installed by "Typical"	7
2.1.2. Selection of installed drive data	8
2.1.3. Patch file for Version up or Addition of Drive data	10
2.2. Uninstall (Windows 10)	11
3. Menu description	12
3.1. File	15
3.1.1. New	15
3.1.2. Open	16
3.1.3. Save	19
3.1.4. Save As	19
3.1.5. Page Setup	21
3.1.6. Print	23
3.1.7. Communication Setup	24
3.1.8. Exit	25
3.2. Parameter	26
3.2.1. Parameter Table	27
3.2.2. Undo / Redo	28
3.2.3. Copy	28
3.2.4. Parameter Import / Parameter Export	28
3.2.5. Selected Parameter Import / Export	29
3.2.6. Parameter Comparison	30
3.2.7. Parameter Comparison with File	31
3.2.8. Select / Select Clear	32
3.2.9. 'Changed' Only	32
3.2.10. 'Display' Only	33
3.2.11. All Parameters	33
3.2.12. Ampere/Volt	33
3.2.13. Hex. / Dec.	33
3.2.14. Default setting	33
3.2.15. Find	34
3.2.16. Parameter Information	34
3.2.17. Other functions	35
3.2.18. Precautions when exporting	36
3.2.19. AUL/F519	37
3.3. Key Pad	39
3.4. Monitoring	40
3.4.1. Inverter Info	40
3.4.2. Monitoring	41
3.4.2.1. Open/Save as	45
3.4.2.2. Print	46
3.4.2.3. Use level trigger	47
3.4.2.4. Continuous Monitoring	48
3.5. Tools	49
3.5.1. Environment Options	49
3.5.1.1. Startup/Comm	49
3.5.1.2. File/Parameter	52
3.5.1.3. Key Pad/Monitor	55
3.5.2. Add / Remove type	59
3.5.3. Maintenance mode	59
3.5.4. Related PC tool (PCL00xZ, PCT00xZ)	60

- 3.6. Help 61
 - 3.6.1. Help 61
 - 3.6.2. About PCM002Z 61
- 4. Standard specification 62
- 5. Using example 64
 - 5.1. Parameter back-up operation 64
 - 5.2. Inverter / Control board replacement operation 65

1. Introduction

“PCM002Z” is an application software for MS-Windows that has the following functions so that parameter setting and setting data can be simplified and stored by connecting an inverter with a personal computer (PC) by using USB or RS-485. Carefully read this manual together with the Inverter Instruction manual for correct use.

- Parameter off-line setting
- Write the parameters saved in the PC to an inverter
- Read inverter parameters and save them in the PC
- Check changed parameters
- Print the parameter table
- Operation panel
- Display the inverter information
- Graphical display of status monitors

* For the “PCM002Z” support inverter and CPU versions, refer to the *Help | About PCM002Z* in the menu of this application. And also refer to 3.5.2 Add / Remove type section.

* This document is mentioned for “PCM002Z V1.13”. Some of the screen and the function are different in the model before this version.

Performance environment

CPU	Intel™ Pentium®-1GHz or more
OS	Verified with Microsoft® Windows® 8.1 (32/64bit) Windows® 10 (32/64bit)
Memory	1GB or more
HDD	Space area About 16GB
Display	640 x 480 dot / 256 colors or more
Communication (USB)	When use USB-Serial Converter, a USB cable and RJ45 connector cable are needed.
Others	Equipped with a CD-ROM drive or internet, a serial ports and a mouse

It is recommended to use a pointing device such as a mouse in operation.

- * When USB-Serial Converter is used, start the PCM002Z while the converter is connected.
Please do not pull the converter out, and do not insert it during execution of the PCM002Z.
- * Do not change the number of PC's COM port when PCM002Z is active.
- * When a RS232 / 485 converter is used, 2 lines type communication cannot be performed.

- * Specifications for this software may change without prior notice.
- * We shall not be liable for any direct and indirect damages that are caused by use or disability to use of this software product.
- * Pentium is the registered trademark of Intel Corporation in U.S.A
- * Windows® is listed above as the abbreviation for a Microsoft® Windows® operating system. Microsoft®, Windows®, Windows® 8.1, Windows® 10 and Microsoft® Excel® are registered trademarks or trademarks of the US Microsoft Corporation in the USA and other countries.

Symbols used in this text have the following meaning.

- “ ”: Items and messages of the PCM002Z
- []: Buttons on the screen of the PCM002Z
- Italic*: Menus of the PCM002Z and Windows
- : Keys of the PC

2. Installation procedure

- If other applications are working, end their operation.
- If you update a version of the PCM002Z, uninstall* the older version.
(The version of PCM002Z can be checked with *Help | About PCM002Z* (Section 3.6.2).)
- Only for the last version software can be update by using Patch file. (Section 2.1.3).

* When the message "**Do you want to allow the following program from an unknown publisher to make changes to this computer?**" is displayed, click [Yes].

* When uninstalling, use *My Computer | Control Panel | Add / Remove Programs*. If user data (initial file PCM002Z.ini, cache file of help file (*.gid), and skip parameter file, etc.) are remained, delete them using the *Windows Explorer*.

2.1. Installation

- ① Copy and save "PCM002Z-W_Vxxx.msi" (Vxxx is software version.) and "Data.cab" files to PC from CD-ROM or Web-site. Please do not delete these files after installation. "Add / Remove model" function of PCM002Z uses these files.
- ② When "PCM002Z-W_Vxxx.msi" is executed, the following window is displayed. Please click [Next] button. (Please execute "PCM002Z-W_Vxxx.msi" as Administrator or higher level access privileges.)

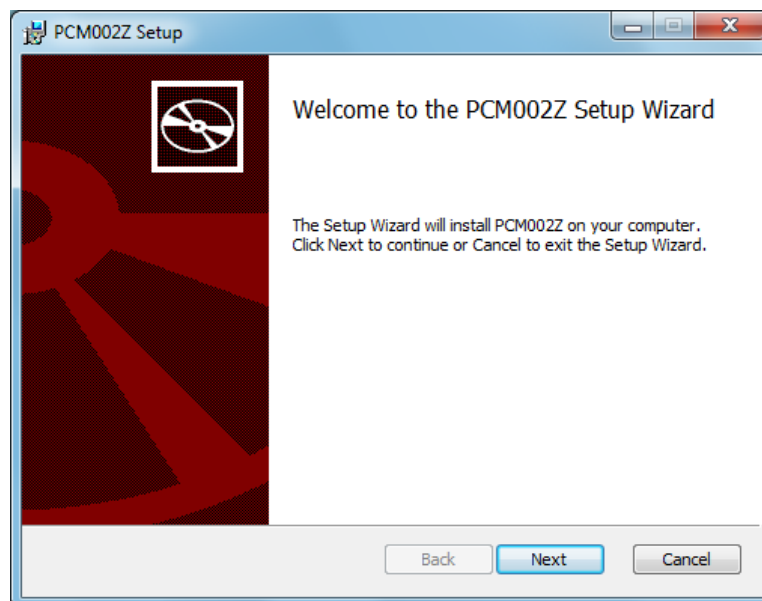


Figure 2-1 Installation Window

③ Please input the user-name etc. and click [Next] button.

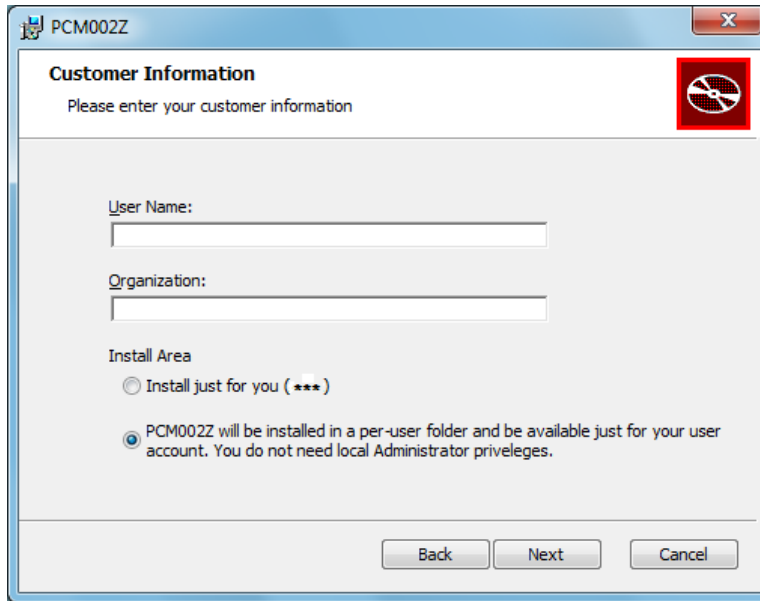


Figure 2-2 Installation Window (Customer Information)

④ The standard installation destination* of PCM002Z is C:\Program Files\PCM002Z-W.
Please select [Change] button clicking when you change the installation destination.

* The destination on 64bit Windows 8.1, Windows 10: C:\Program Files (x86)\PCM002Z-W.

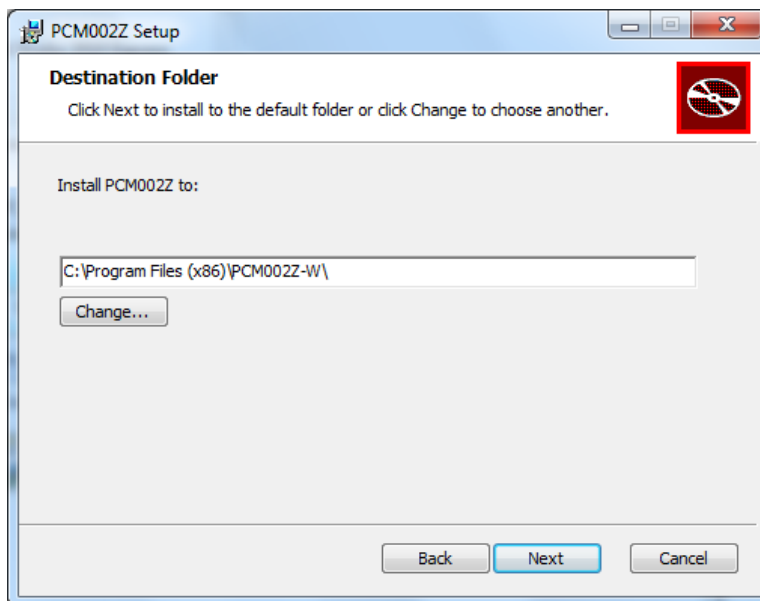


Figure 2-3 Installation Window (Destination Folder)

⑤ Please restart Windows.

2.1.1. Drive data installed by "Typical"

Later drive data is installed when "Typical" is selected, and it is possible to select on PCM002Z start-up window.

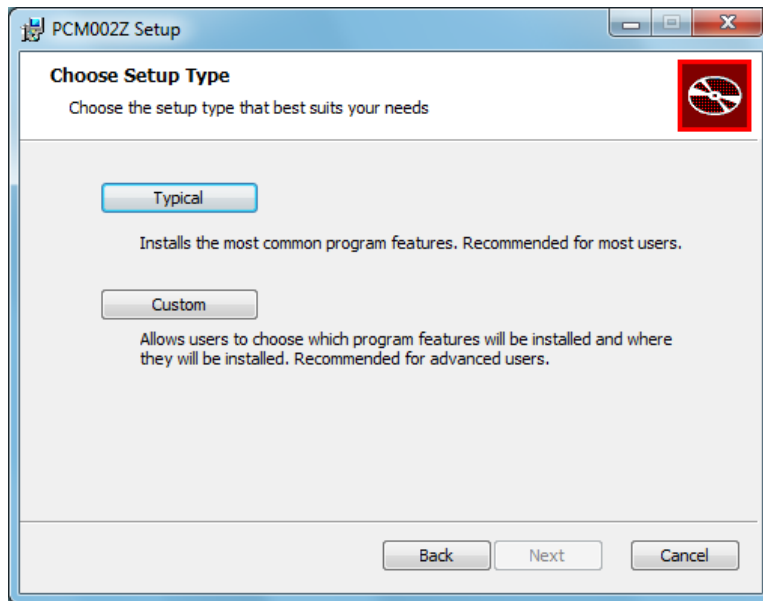


Figure 2-4 Installation Window (Setup Type selection)

* After installation, the drive data can be added and be deleted. Refer to the section 3.5.2.

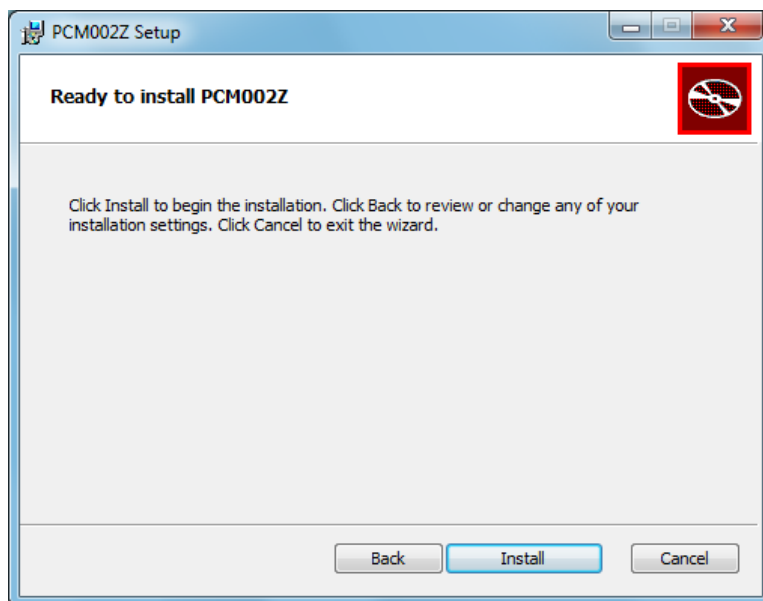
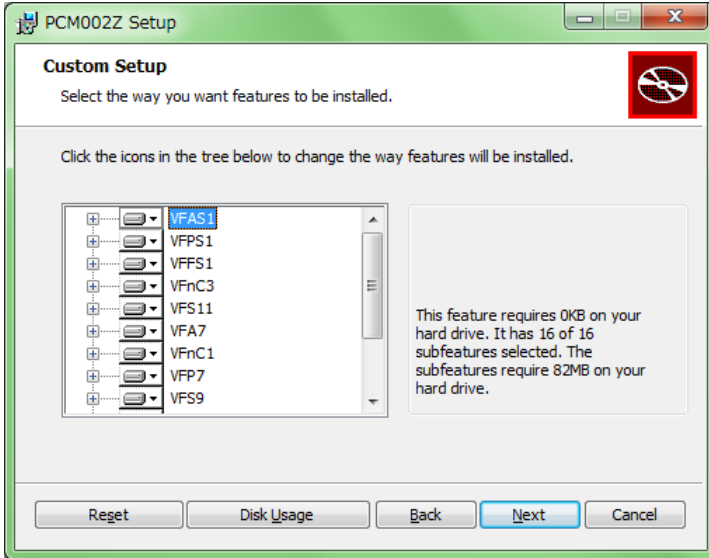


Figure 2-5 Installation Window (Install start confirmation)

2.1.2. Selection of installed drive data

The following window is displayed when "Custom" is selected and the installed drive data can be selected.

* The unselected drive data cannot be shown on PCM002Z start-up window.






-  : All versions have been selected.
-  : A part of version has been selected.
-  : All versions have not been selected.

Figure 2-6 Installation Window (Drive data selection)

Selection example 1) Using "VFPS1(V614)"

1. Click "VFPS1".
2. Click ▼ on "VFPS1(V614)" button.

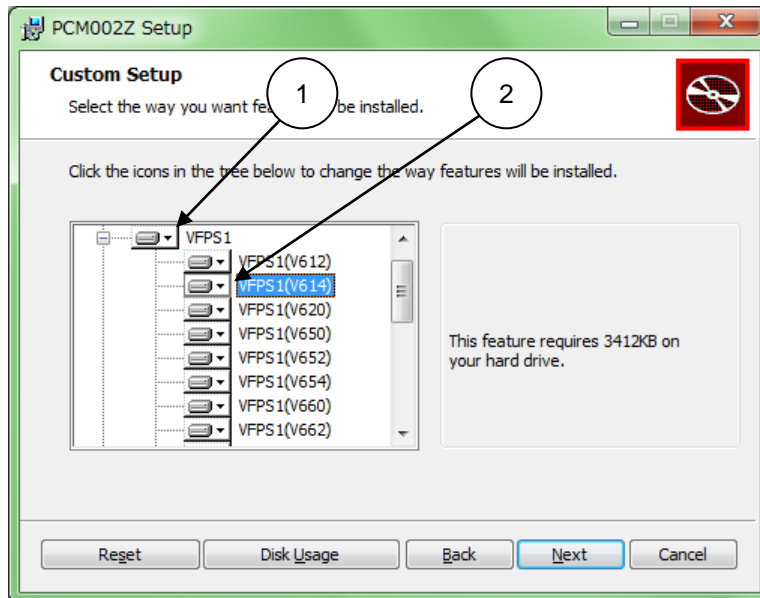


Figure 2-7 Installation Window (Drive data selection)

3. The figure below is displayed. Select "Will be installed on local hard drive".

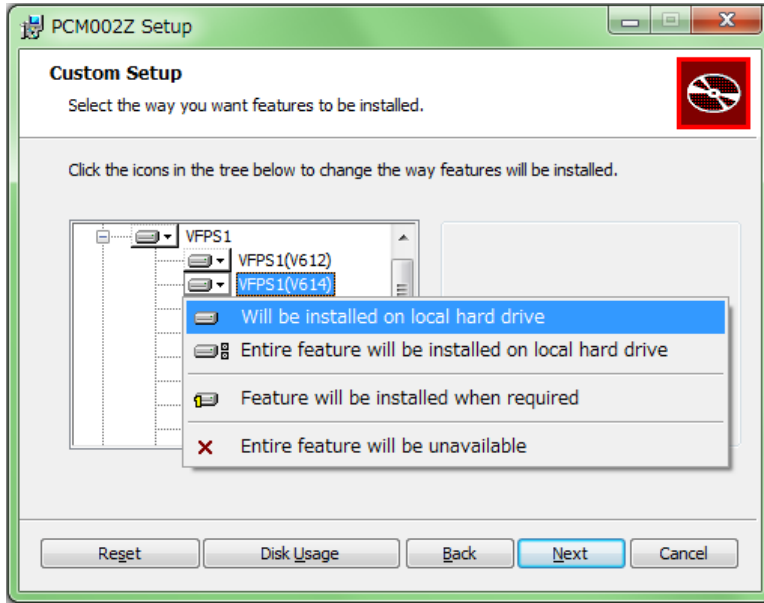


Figure 2-8 Installation Window (Drive data selection)

Selection example 2) Using all CPU version of "VFPS1"

1. Click ▼ on "VFPS1" button.
2. The figure below is displayed. Select "Entire feature will be installed on local hard drive".

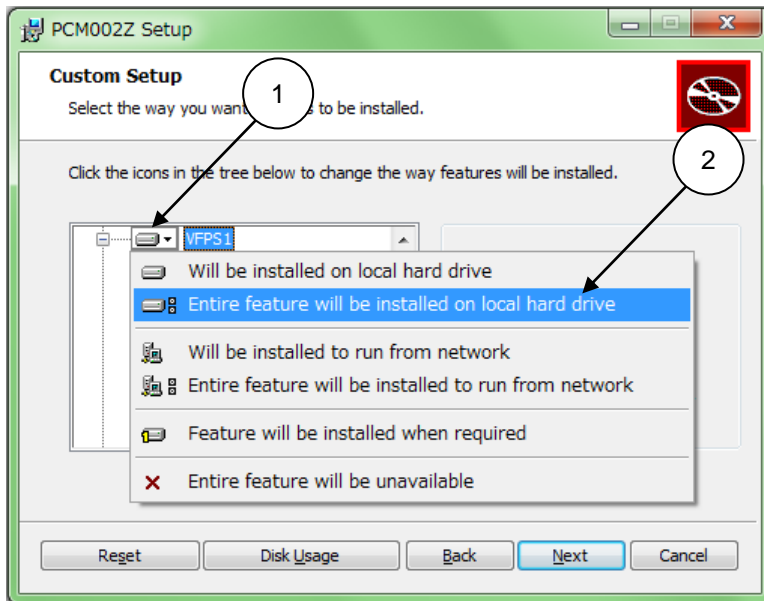


Figure 2-9 Installation Window (Drive data selection)

2.1.3. Patch file for Version up or Addition of Drive data

Installed PCM002Z (installed by Standard installer, added Drive data or Version up by standard Patch file) can be updated by Patch file.

Copy a set of Patch files to PC, and execute PCM002Z-W_Vxxx_Vyyy_Patch.bat or PCM002Z-W_Vxxx_yy_Patch.bat (Vxxx is adaptive PCM002Z version) as Administrator or higher level access privileges.

Patch file name

PCM002Z-W_Vxxx_Vyyy_Patch.bat	(update PCM002Z version Vxxx to Vyyy)
PCM002Z-W_Vxxx_yy_Patch.bat	(append drive data to PCM002Z version Vxxx)

Note: The patch file can update only the corresponding PCM002Z version. Please confirm Installed PCM002Z version and the adaptive patch file.

2.2. Uninstall (Windows 10)

Select *Settings – Apps* from the Windows start menu, then select “PCM002Z” and and click [Uninstall].

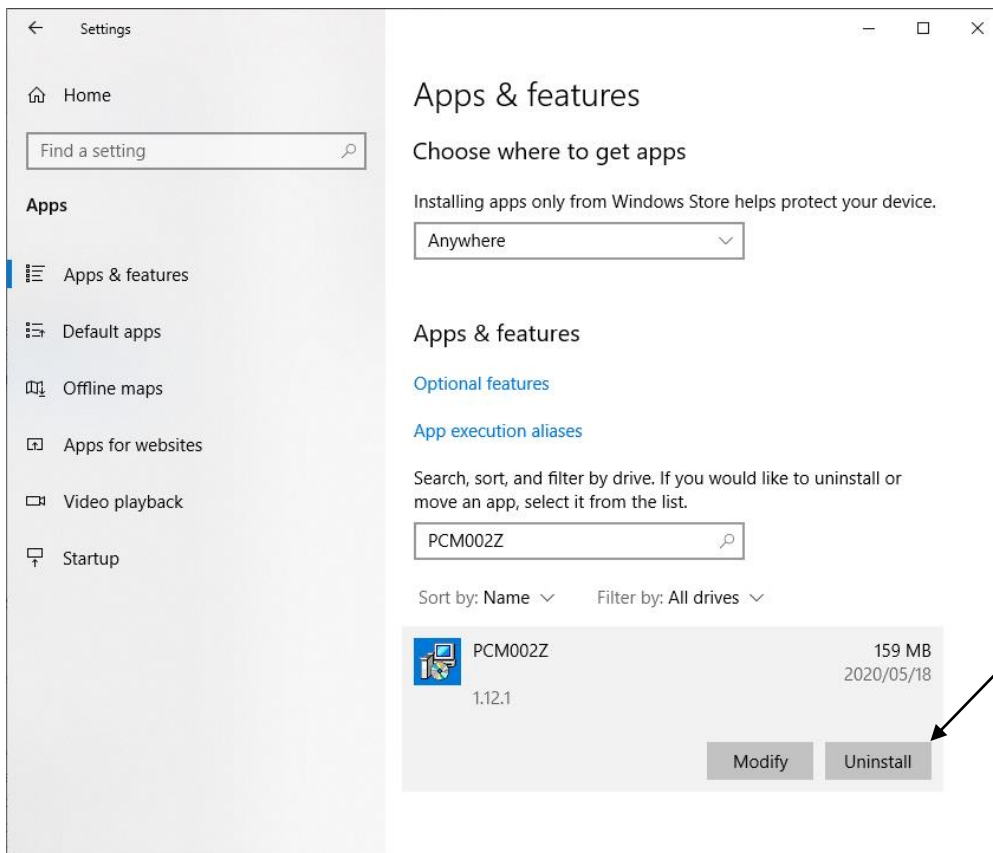


Figure 2-10 *Apps and Features* Window (Windows 10)

3. Menu description

Each setting menu is described here.

Starting of PCM002Z displays the selection screen of a language, a inverter type-form, and a CPU version to be used. As for the language, "**Japanese**" is displayed at the first execution after installation, and as for the inverter type-form, "**VFAS1-2004P**" is displayed. Please choose the language, the inverter type-form and the CPU version from a down-list, and push the **[OK]** button.

* CPU version can be checked by status monitor of the inverter.

If two CPU versions which are CPU1 version and CPU2 version are displayed in status monitor of the inverter, please check CPU1 version and set it.

Refer to the instruction manual of each inverter for details how to check CPU version.

* The inverter type-form can be made to recognize automatically when it can communicate at the starting. (Related article *Environment Options* (Section 3.5.1.)) However, depending on a communication port of the PC setup and the inverter type-form and the CPU version, even when it can communicate, recognition may be impossible.



If you select the drive different from the connected drive, the parameters on the PCM002Z differ from those on the inverter. In this case, the errors will occur at communication.



Figure 3-1 Startup screen

When the language, the drive and the CPU version are selected and the **[OK]** button is pressed, the main menu and *Parameter Table* are displayed.

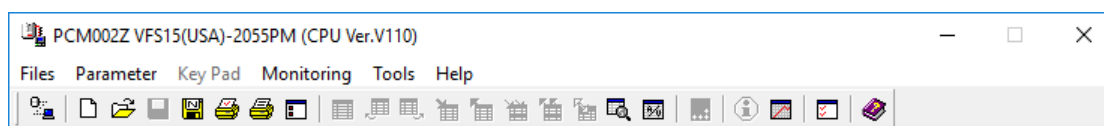






Figure 3-2 Main Menu screen


At Start up, some menu and buttons required for communication are displayed as enable. When the check box, *Tools / Environment Option / Display last selected Inverter*, is with no check (check the connected drive type at start up) or when some menu and buttons required for communication are failed to communicate with the drive, those menu and buttons color are changed to be disable color (gray). As a result of execution of *Communication Setup / Check the configuration of the drive* or *Communication check* button, if communication is available, menu and buttons are changed to be enable.


Tool bars

: Check communication each time when this button is pressed (the communication is possible).

*: When communication is impossible. : Communicating.


: Execute *File* | *New*. (Refer to Section 3.1.1.)

: Execute *File* | *Open*. (Refer to Section 3.1.2.)

: Execute *File* | *Save*. (Refer to Section 3.1.3.)

: Execute *File* | *Save As*. (Refer to Section 3.1.4.)

: Execute *File* | *Page Setup*. (Refer to Section 3.1.5.)

: Execute *File* | *Print*. (Refer to Section 3.1.6.)

: Start *File* | *Communication Setup*. (Refer to Section 3.1.7.)

: Execute *Parameter* | *Parameter Table*. (Refer to Section 3.2.1.)

: Execute *Parameter* | *Undo*. (Refer to Section 3.2.2.)

: Execute *Parameter* | *Redo*. (Refer to Section 3.2.2.)

: Execute *Parameter* | *Parameter Import*. (Refer to Section 3.2.4.)

: Execute *Parameter* | *Parameter Export*. (Refer to Section 3.2.4.)


: Execute *Parameter* | *Selected Parameter Import*. (Refer to Section 3.2.5.)

: Execute *Parameter* | *Selected Parameter Export*. (Refer to Section 3.2.5.)

: Execute *Parameter* | *Parameter Comparison*. (Refer to Section 3.2.6.)

: Execute *Parameter* | *Find*. (Refer to Section 3.2.15.)


: Execute *Parameter* | *Ampere/Volt*. (Refer to Section 3.2.12.)

: Start *Key Pad*. (Refer to Section 3.3.)

: Execute *Monitoring* | *Inverter Info.*. (Refer to Section 3.4.1.)

: Execute *Monitoring* | *Monitor*. (Refer to Section 3.4.2.)

: Execute *Tools* | *Environment Options*. (Refer to Section 3.5.1.)

: Display *Help*. (Refer to Section 3.6.1.)

* Blank (gray) display means unavailable.

3.1. File

File operations and print are executed.

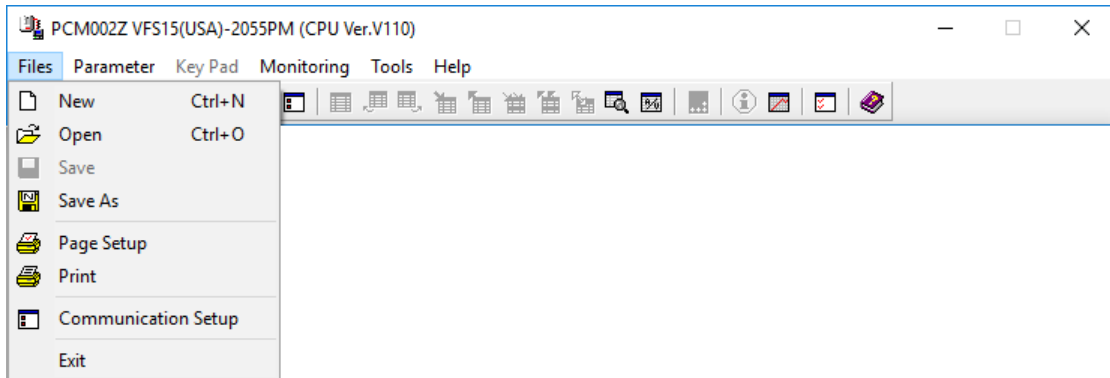


Figure 3-3 *File* menu screen

3.1.1. New

The present parameter setting is discarded, and parameter setting files are newly created. The selection of the inverter type starts again. Menu and Message Language are only changed when PCM002Z starts. The selected inverter type is displayed on the title bar of the main menu.

3.1.2. Open

Open "**PCM002Z Parameter Data (*.pcm)**" file, "**PWU003Z Parameter Data (*.cfg)**" file or "**RKP010Z Parameter Data (*.cfg)**" file. (Also can open PCM001Z file)

A dialog box to select files is displayed. Then specify a file name and press the **[Open]** button. The name of the file is displayed on the title bar of the main menu.

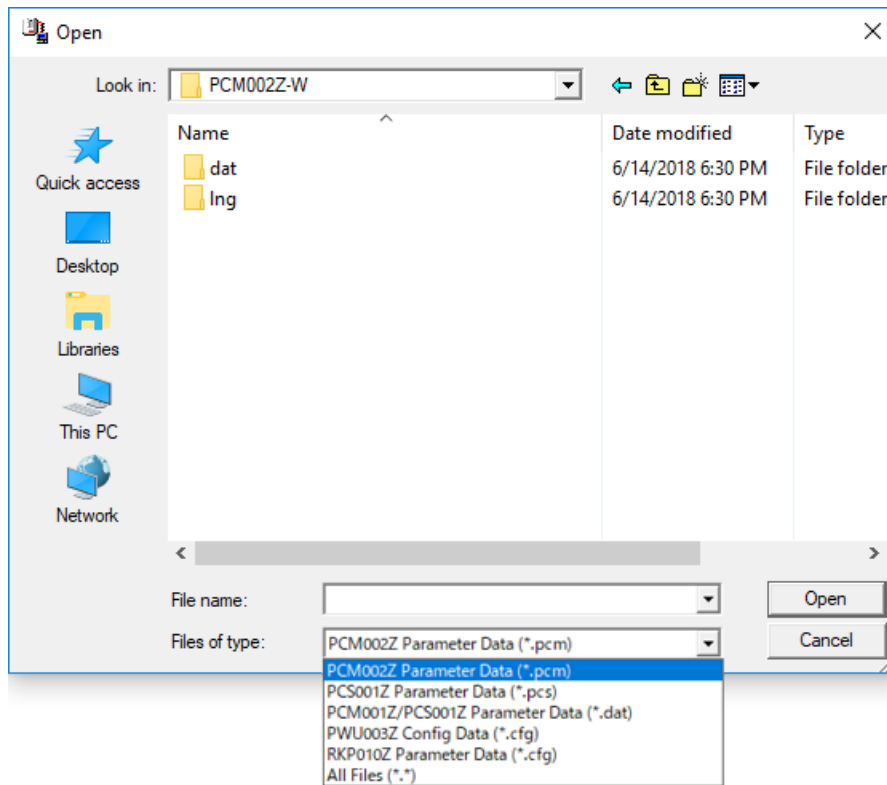


Figure 3-4 File | Open menu screen

- * Only when the inverter, that PWU003Z corresponds, has been selected, "**PWU003Z Parameter Data (*.cfg)**" is displayed.
- * Only when the inverter, that PKP010Z corresponds, has been selected, "**RKP010Z Parameter Data (*.cfg)**" is displayed.
- * When select "**PCL001Z Parameter Data (*.pcl)**", select "**File of type**" to "**All Files (*.*)**".

When the file saved for a different inverter type is chosen, the following message is displayed.

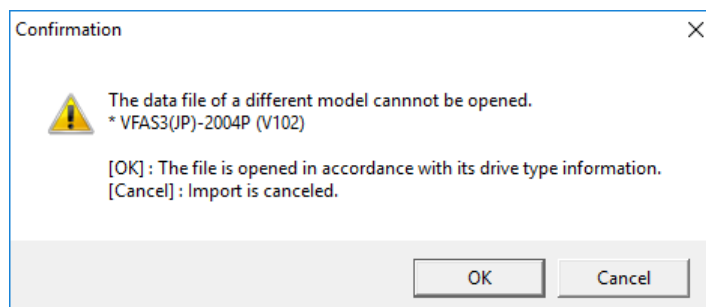


Figure 3-5 File | Open error message screen

A confirmation message will be displayed when opening the file saved under a different region setting.

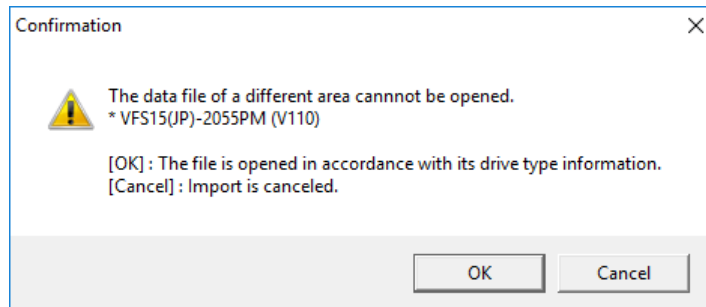


Figure 3-6 File | Open error message screen at different region setting

When the file saved for a different inverter capacity is chosen, the following message is displayed. When button **[No]** is clicked, the file is read except the data specific to the inverter type (As for the inverter form parameter data, default data is read). Also, for models with the parameter AUL/F519, the AUL/F519 setting value saved in the data file is valid.

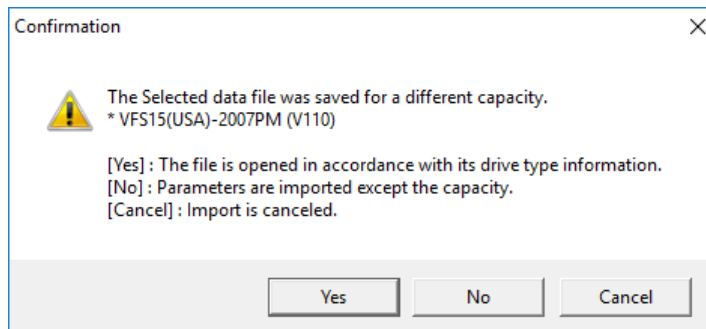


Figure 3-7 File | Open confirmation message screen at different capacity

* If you want to continue editing the parameters according to the AUL/F519 settings set on the inverter side, initialize the parameter list according to the settings of the inverter on the message screen that is displayed when connecting to the inverter. (Refer to section 3.2.19)

When the file saved by a different inverter software (CPU) version is chosen, the following message is displayed (Only *.pcm format file).

When [**Cancel**] button is clicked, data reading is stopped.

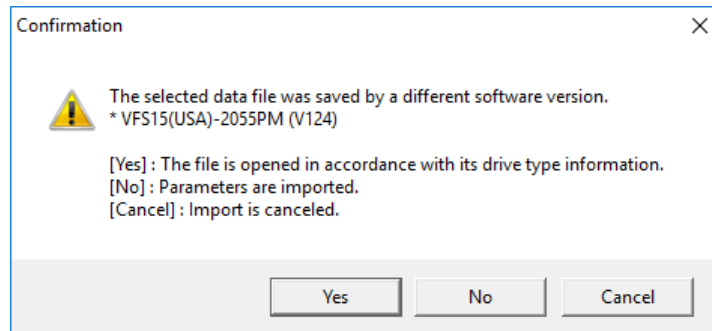


Figure 3-8 *File / Open* confirmation message screen at different software version

When reading a data file created with an inverter CPU version different from the inverter CPU version selected at PCM002Z startup, the following error may occur because the corresponding parameter list differs between CPU versions. If you are not using the parameter of the communication number in which the error occurred, you can press [OK] to continue reading.

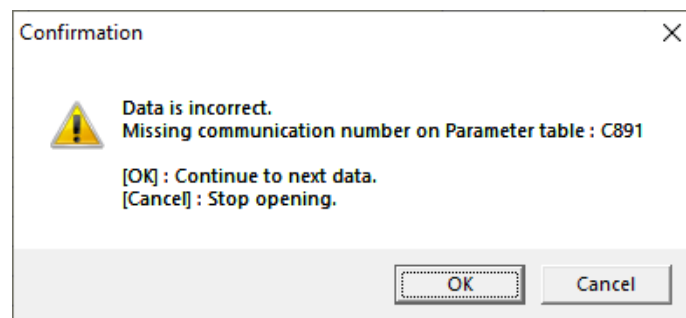


Figure 3-9 Example of error message display when parameter does not exist in parameter list

3.1.3. Save

The present parameter setting is overwritten in the existing files.

If there is no file to be overwritten, this menu will be a blank display and cannot be selected. "**PCM002Z Parameter Data (*.pcm)**" or "**PWU003Z Parameter Data (*.cfg)**" or "**RKP010Z Parameter Data (*.cfg)**" file only can be overwritten.

3.1.4. Save As

If you select "**PCM002Z Parameter Data (*.pcm)**", "**PWU003Z Parameter Data (*.cfg)**" or "**RKP010Z Parameter Data (*.cfg)**" file, the present parameter setting will be saved. When the file save dialog is displayed, specify a folder, and save as.

* In the status of default, the parameter settings only displayed as "Changed" in the parameter table are saved. (Related article *Environment Options - File/Parameter* (Section 3.5.1.2.))

* The saved folder as default is the installed folder of PCM002Z.

* Saved folder is follows.

Windows 8.1, Windows 10 (32bit)

C:\Users*(User Account Name)*\AppData\Local\VirtualStore\Program Files\PCM002Z-W

Windows 8.1, Windows 10 (64bit)

C:\Users*(User Account Name)*\AppData\Local\VirtualStore\ Program Files (x86)\PCM002Z-W

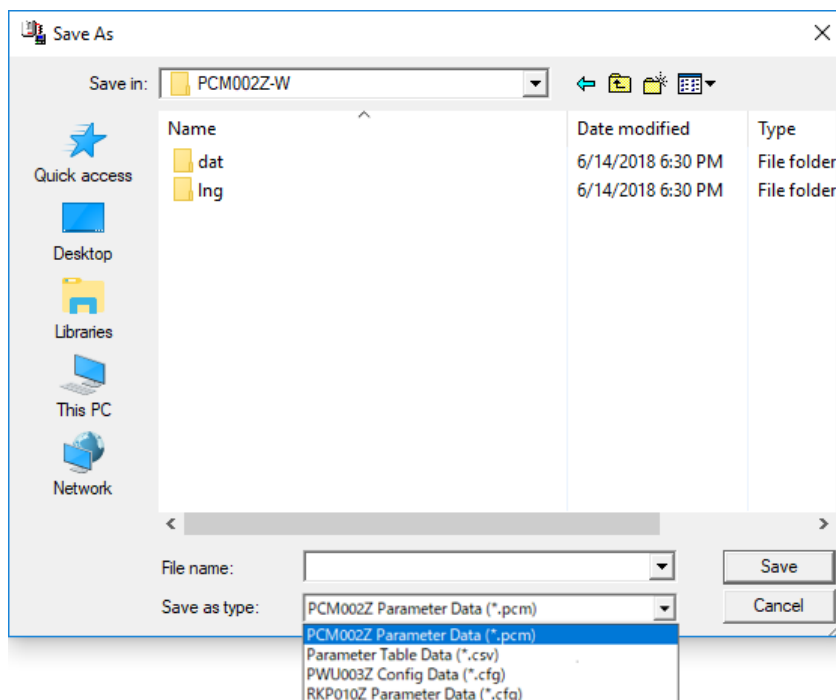


Figure 3-10 File | Save As screen

If you select "**Parameter Table Data (*.csv)**" as the file type, *Parameter Table* will be saved in a csv format.

If you select "**PWU003Z Config Data (*.cfg)**" as the file type, *Parameter Table* will be saved in a cfg format that can be opened by PWU003Z.

If you select "**RKP010Z parameter Data (*.cfg)**" as the file type, *Parameter Table* will be saved in a .cfg format that can be opened by RKP010Z.

Both *.cfg format files have no compatibility, you should save righteous format which for PWU003Z or RKP010Z.

⚠ Notice



Mandatory

▼ RKP010Z required the parameter file that following "RKP010Z parameter file naming rule". You must name the parameter file correctly.
If the parameter file name is not correct, LCD panel will reject to copy capacity and multi-rating related parameters to the inverter.

RKP010Z parameter file naming rule

Naming rule: VFXXX-YYYYY#ZZ

XXX is inverter series name. YYYYY is capacity identify name.

ZZ is number from 0 to 99 that you can select freely.

For example, PCM002Z shows "PCM002Z VFAS3(EU)-4450PC (CPU Ver.V118)" on the title bar.

You must save parameter file as "VFAS3-4450PC#0", "VFAS3-4450PC#1", ..., or "VFAS3-4450PC#99".

* If you select the "**Parameter Table Data (*.csv)**" with selecting 'Changed' Only or 'Display' Only, the only displayed parameters are output to the file. In V1.12 or later version, when "Default" value shown on *Parameter Table*, it is also saved.

* The saved file name is displayed on the title bar of the main menu.

* Only when the drive that corresponds PWU003Z has been selected, "**PWU003Z Parameter Data (*.cfg)**" is displayed.

* Only when the drive that corresponds PKP010Z has been selected, "**RKP010Z Parameter Data (*.cfg)**" is displayed.

* In case of AppData folder missing

Depending on the Windows setting of folders, AppData folder cannot be displayed due to the hidden folder.

If you cannot find the AppData folder, please change the setting of Windows below.

for Windows 8.1

Select *Search | Control panel | Appearance and Personalization | Folder Options* from the charms (Figure 3-11) of Windows.

Select *View* tab and set *Show hidden files, folders, and drives* under *Hidden files and folders* in the box of *Advanced settings*.

for Windows 10

Right Click Windows start button and select *File Explore*. And select *View*. And check *File name extension* and *Hidden items* check boxes.

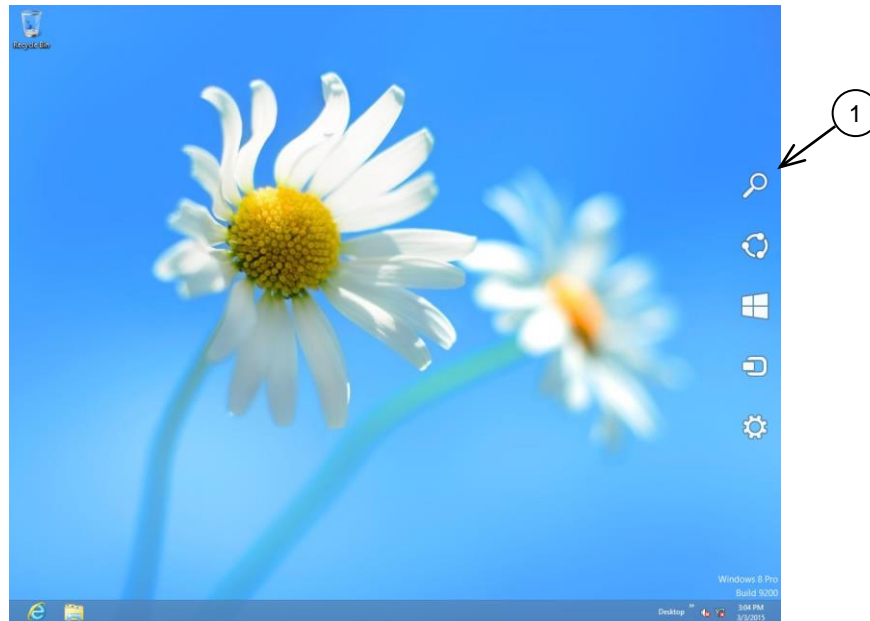


Figure 3-11 Windows 8.1 Charms

3.1.5. Page Setup

When printing the *Parameter Table*, specify the paper size and other items for PCM002Z.

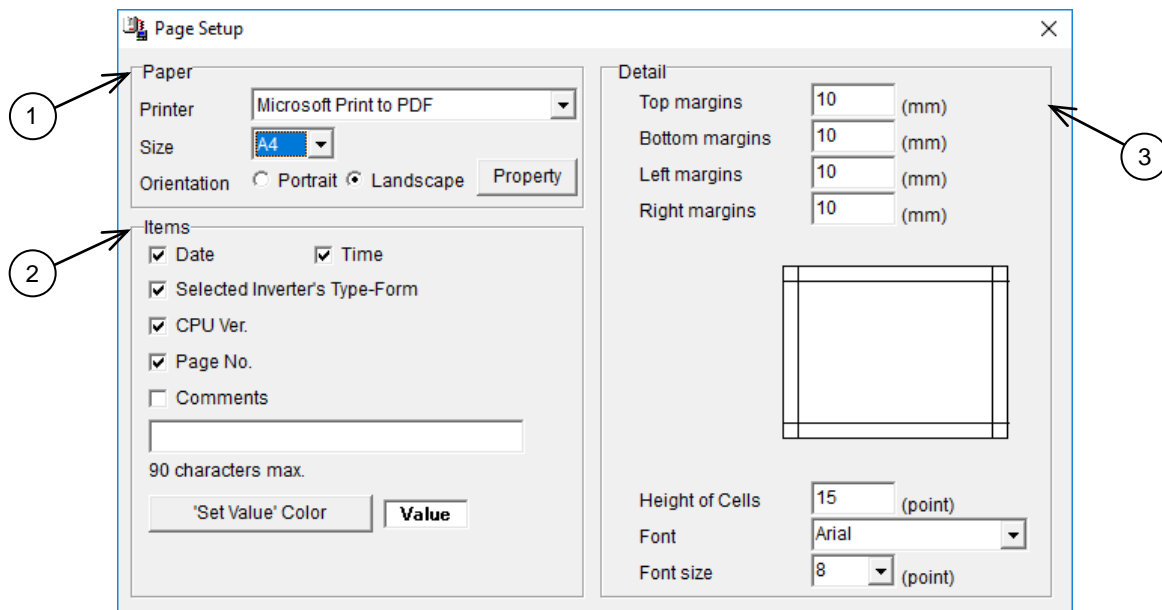


Figure 3-12 File | Page Setup screen

1) Paper

Specify the size of paper to use and orientation. You can select the size from A3, A4, A5, B4 and B5.

2) Items

Select the items to be printed together with the *Parameter Table*. If you check both “Selected inverter’s Type-Form” and “CPU Ver.”, and the inverter has AUL and F519 parameter, AUL and F519 setting are printed.

If you check “**Comments**”, the characters entered in the writing space below will be printed. Comments are 90 character strings. If “**Comments**” is not checked, the comments will be displayed in gray.

The color of characters of "Set Val." can be specified by "**Value' Color**" at printing.

3) **Detail**

Spaces other than spaces in the *Parameter Table*, with respect to the paper, are specified by "**Margin**".

For example, if you open punch holes in the printed paper, set the left margin to about 20 mm.

* The decimal point cannot be set.

The height of cells of the *Parameter Table* is specified by "**Height of Cells**". When printing in a sheet of large paper, you can adjust "**Height of Cells**" and "**Font size**" so that print becomes natural.

The style and font size to use for print can be specified by "**Font**" and "**Font size**" (cannot be applied to "**Title**").

3.1.6. Print

Print the *Parameter Table*. A print image can be checked on the preview screen.

The layout of each print item follows the display in the *Parameter Table*.

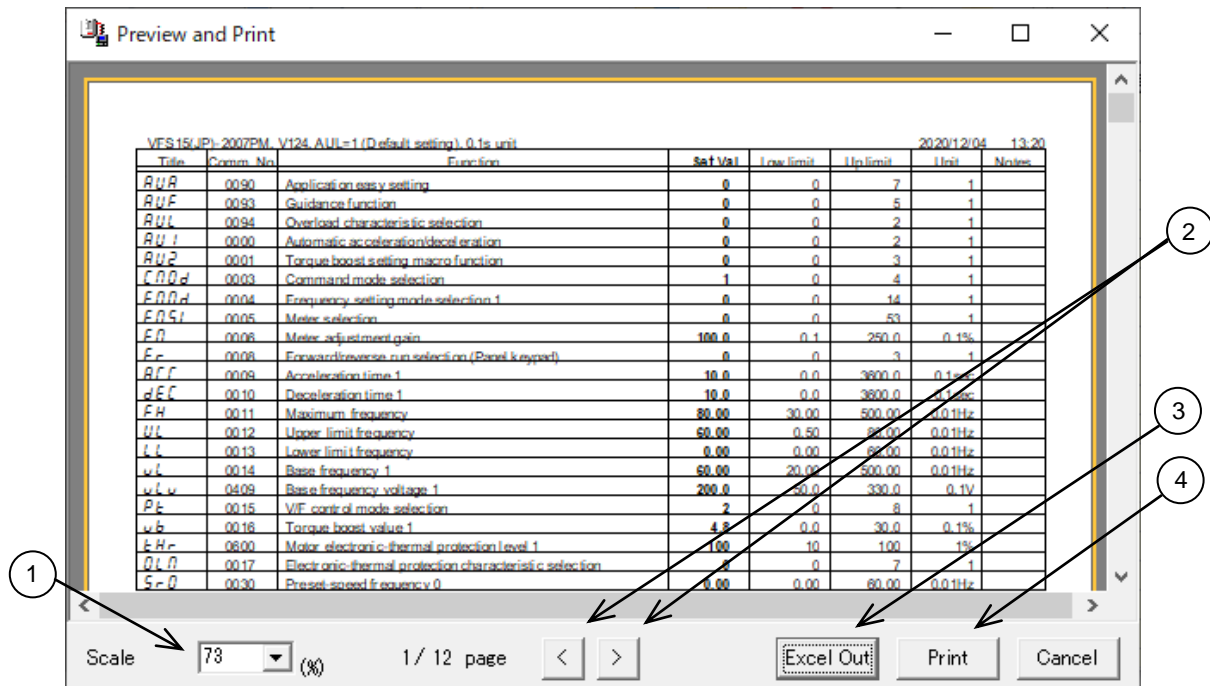


Figure 3-13 File | Print screen

1) Preview Multiplication

The scale factor of the displayed preview is changed.

2) Page Selection

The previous page and the next page can be previewed with the [<] and [>] buttons, respectively.

3) Excel Out

If you click the [Excel Out] button, the preview contents will be saved to a file as Excel file format.

4) Print execution

If you click the [Print] button, the preview contents will be sent to a printer for print.

* [Print] can be selected after preview process is complete.

3.1.7. Communication Setup

The setup of the COM port on the computer side is executed. Set to the communication setting of the inverter you use. Improper setting does not allow the correct data communications.

After setup of *Communication Setup*, if menu related to the communication and buttons are blank indication (gray color), click on *Communication check* button of the tool bar, and renew the status of menu and buttons related to the communication.

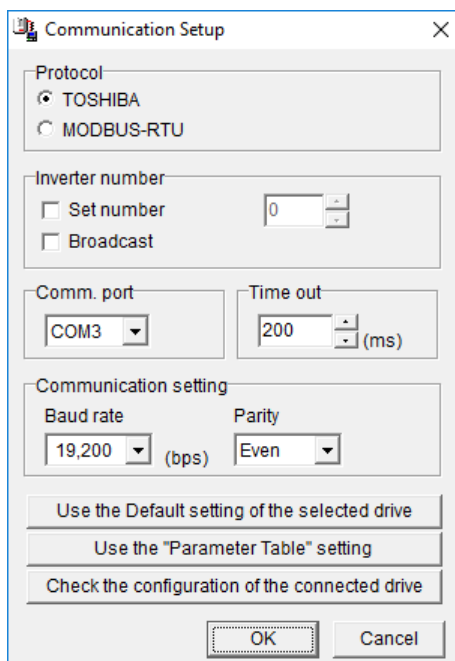


Figure 3-14 File | *Communication Setup* screen

If the baud rate is low, such as 1,200 bps or 2,400 bps, it is necessary to specify “**Time out**” to be longer.

*1 The “**Broadcast**” function does not support communications by group units that use the wild card (*) described in each drive series “RS485 Communications Function Manual”.

*2 When a USB-Serial Converter is used, start the PCM002Z while the converter is connected.

[Use the Default setting of the selected drive]

The communication setting of the selected drive's default setting is displayed in each item of *Communication Setup*.

[Use the "Parameter Table" setting]

The communication setting of the parameter concerning the communication in *Parameter Table* is displayed in each item of *Communication Setup*.

[Check the configuration of the connected drive]

The communication setting for the connected drive is investigated. When the condition that can be communicated is found, they are displayed in each item of *Communication Setup*.

Below table is the checking combination of communication setting.

* The changed item is displayed in blue.

	Description
Communication port	COM1~15
Communication Speed	9,600bps, 19,200bps, 38,400bps, 57,600bps, 115,200bps
Parity	Even, Odd, None
Protocol	TOSHIBA, MODBUS-RTU

3.1.8. Exit

Close this application.

3.2. Parameter

Parameter setting, Import, and Export are executed.

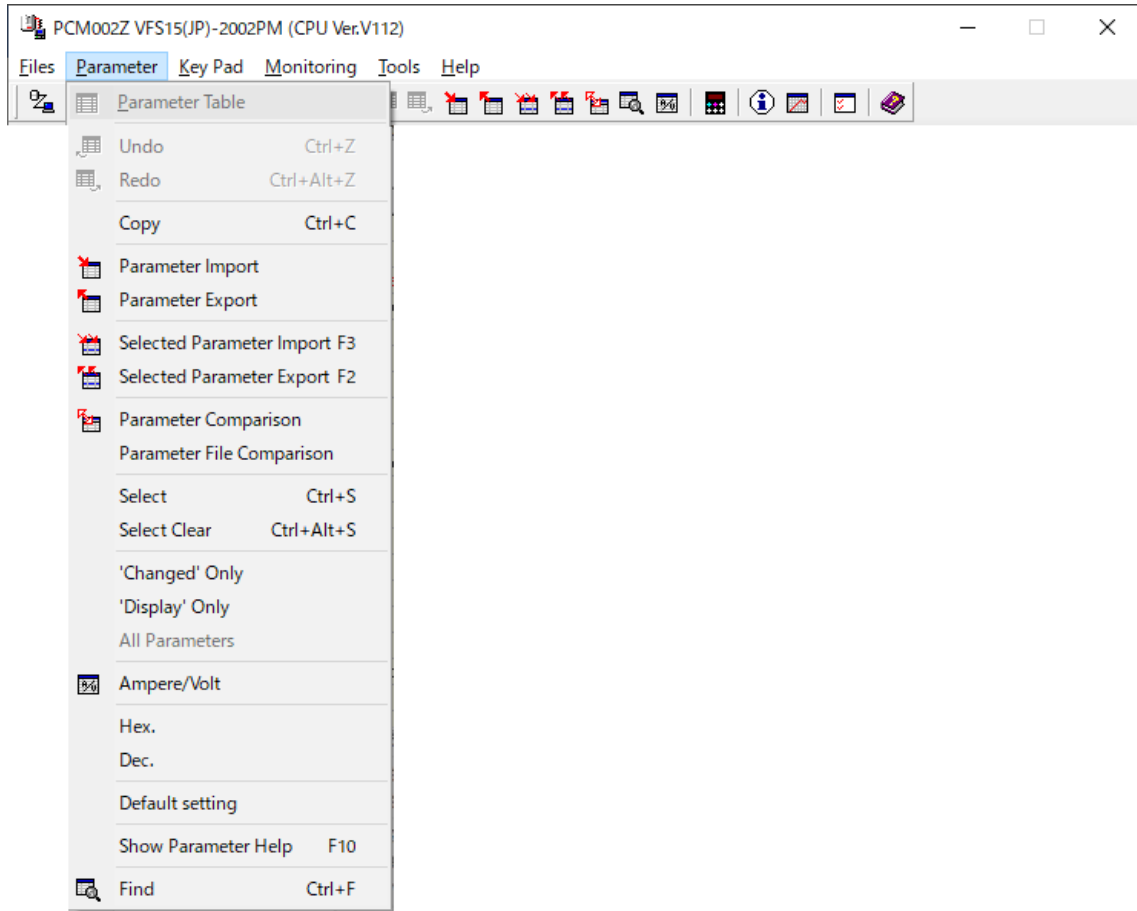


Figure 3-15 *Parameter* menu screen (Parameter Table display)

When the Parameter Table is not displayed, the menu below is displayed.

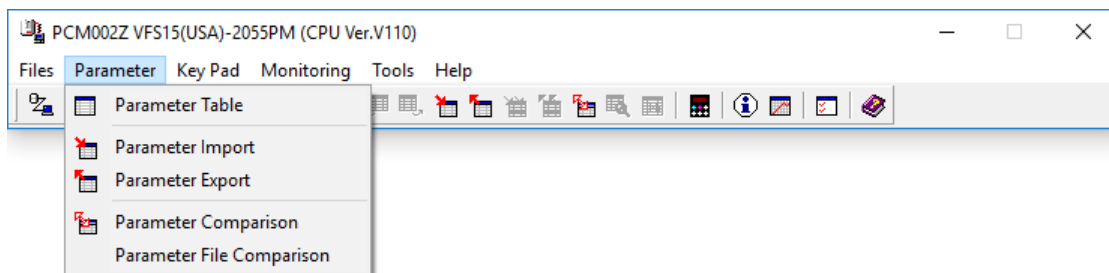


Figure 3-16 *Parameter* menu screen (Parameter Table non display)

3.2.1. Parameter Table

Parameters are listed in the table.

Title	Comm. No.	Function	Set Val.	Low limit	Up limit	Unit	Change	Display
AUA	0090	Application easy setting	0	0	7	1		
AUF	0093	Guidance function	0	0	5	1		
AUL	0094	Overload characteristic selection	0	0	2	1		
AU1	0000	Automatic acceleration/deceleration	0	0	2	1		
AU2	0001	Torque boost setting macro function	0	0	3	1		
CMOd	0003	Command mode selection	1	0	4	1		
FMOd	0004	Frequency setting mode selection 1	0	0	14	1		
FMSL	0005	Meter selection	0	0	53	1		
FM	0006	Meter adjustment gain	100.0	0.1	250.0	0.1%		
Fr	0008	Forward/reverse run selection (Panel keypa	0	0	3	1		
ACC	0009	Acceleration time 1	10.0	0.0	3600.0	0.1sec		
dEC	0010	Deceleration time 1	10.0	0.0	3600.0	0.1sec		
FH	0011	Maximum frequency	80.00	30.00	500.00	0.01Hz		
UL	0012	Upper limit frequency	60.00	0.50	80.00	0.01Hz		
LL	0013	Lower limit frequency	0.00	0.00	60.00	0.01Hz		
vL	0014	Base frequency 1	60.00	20.00	500.00	0.01Hz		
vLv	0409	Base frequency voltage 1	230.0	50.0	330.0	0.1V		
Pt	0015	V/F control mode selection	0	0	8	1		
vb	0016	Torque boost value 1	4.0	0.0	30.0	0.1%		
tHr	0600	Motor electronic-thermal protection level 1	100	10	100	1%		

Figure 3-17 Parameter | Parameter Table screen

If a parameter column is clicked, parameters can be entered in “Set Val.” cells (white). The contents of other cells (yellow) cannot be changed.

The setting values that are different from the default setting are displayed as “Changed” on the right side of columns. Setting values of the parameters not written in the inverter after the change are displayed in bold.

* Some drives have Read Only Parameters such as AUL or F519. These parameters are displayed with Red color in the parameter table. So set these parameter functions at Start up window or set by the drive panel.

Key enter

- Enter** key:Determines the value entered as a setting value.
- Esc** key:Returns to the setting value that was not changed when pressed during changing.
- Del** key:Sets the setting value of selected parameters to the default value.
- F3** key:Imports the setting value of selected parameters from the inverter.
- F2** key:Exports the setting value of selected parameters in the inverter.

Numeric value input by hexadecimal code: a numeric value entered with a “h” first is regarded as a hexadecimal code.

Display color

- Bold in gray**:Parameters (“Set Val.” only) for which writing to the inverter by using the **F2** key failed.
- Display in gray**:Parameters skipped when import from the inverter.
- Display in red**:Parameters unable to set to the inverter.

3.2.2. Undo / Redo

The operation executed by the **Enter** key is undone. The undo count can be specified with *Tools / Environment Options* (Section 3.5.1.)

When you redo the operation undone, execute **Redo**.

3.2.3. Copy

Fix cells (cells in gray) corresponding to the range selected with the mouse are transferred to a clipboard. **Paste** by Microsoft® Excel® or other software allows for paste in each cell.

3.2.4. Parameter Import / Parameter Export

Each parameter setting value is imported from the inverter, or the values specified in the *Parameter Table* are exported in the inverter.

If communications are impossible, communication errors will occur. Please confirm the connection or *Communication Setup*. If the CPU version of the inverter that communicates with the PCM002Z support CPU version is different, communication errors may occur (this is because parameters corresponding to the communication numbers specified on the PCM002Z side for import do not exist on the inverter side). In this case, press the **[OK]** button to skip, and continue parameter import.

* When the drive is in start setup menu ("SE" is blinking), the setting value of the parameter "SE" (Comm. No. 0099) is 0.

The parameter communication number and function name skipped at *Parameter Import* is named as a file name showing "DD/HH/MM/SS", and can automatically be saved in a folder where this application was installed. (Related article *Environment Options* (Section 3.5.1.))

(Example: When read is complete at 2:21:43 p.m. on 25th, it shows 25d14h21m43s.txt.)

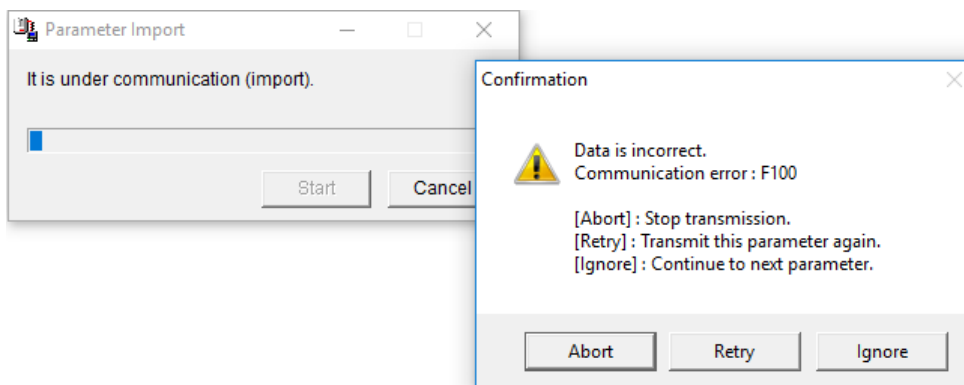


Figure 3-18 Communication Error screen



Caution

If parameters are written in the different drive from the drive selected at PCM002Z startup, there is possibility of incidents which may cause damage to inverters or motors.

If the selected drive Type/Form on PCM002Z is different from the connected drive, the following figure is displayed when *Parameter Import* or *Parameter Export* is executed,

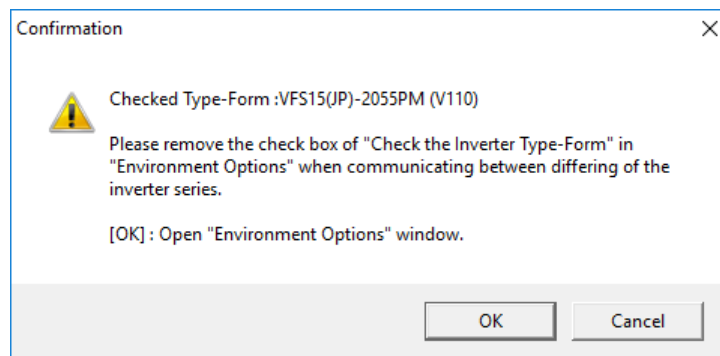


Figure 3-19 Warning screen for the the different drive

Similarly, the following figure is displayed for *Parameter Comparison*.

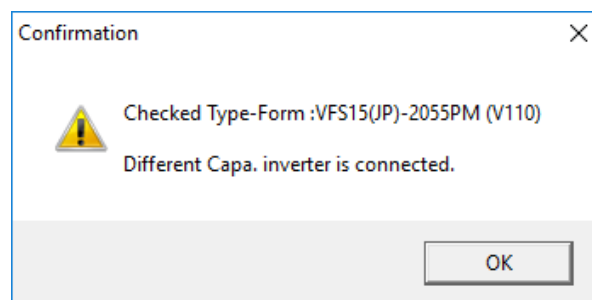


Figure 3-20 Warning screen for the the different drive

* In case of check box of [Save 'Change' Parameters only] in *Environment Options*, *Key Pad/Monitor* menu, default setting parameters are not copied to the inverter. If any parameters should be set to default setting value, uncheck the check box. (Refer to *Environment Options*, *File/Parameter* (3.5.1.2).)

3.2.5. Selected Parameter Import / Export

The only parameters selected in *Select* (Refer to section 3.2.8) are import or export from / in the inverter. The parameter set up in non-display (Refer to section 3.2.10) is not read and written.

* When the drive is in start setup menu ("5 E E" is blinking), the setting value of the parameter "SEt" (Comm. No. 0099) is 0.

3.2.6. Parameter Comparison

PCM002Z side parameter setting value is compared with the inverter side parameter setting value.

When a different setting value is found, the following message is displayed. And not displayed parameters are also compared. (Section 3.2.11)

(Related article *Environment Options | Startup/Comm. tab page* (Section 3.5.1.1.))

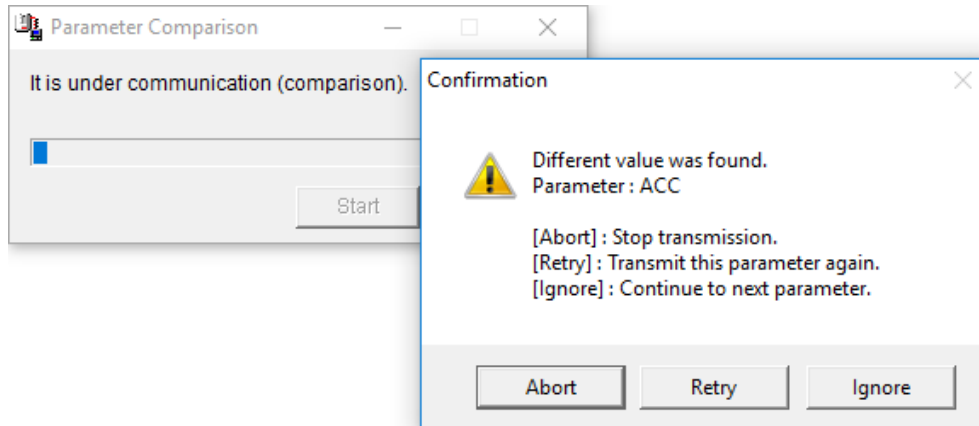


Figure 3-21 Comparison message screen

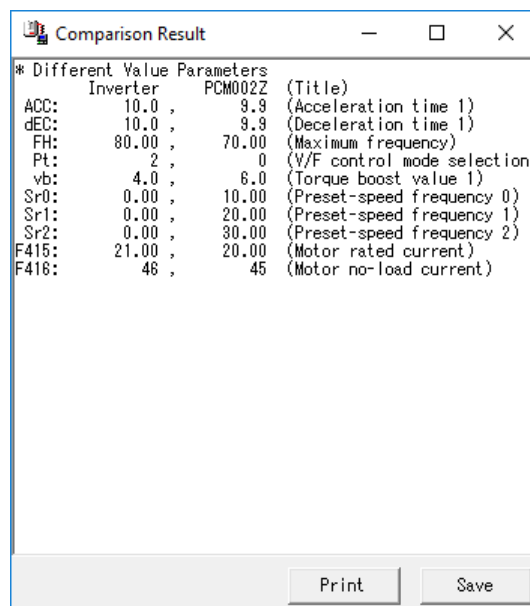


Figure 3-22 Comparison result screen

* When changing Parameter unit to Ampere or Volt unit by *Ampere/Volt* setting (Refer to 3.2.12), slightly different value may cause to report as Comparison results.

3.2.7. Parameter Comparison with File

PCM002Z side parameter setting value is compared with the saved parameter file.

When a different setting value is found, the following message is displayed. And not displayed parameters are also compared. (Section 3.2.11)

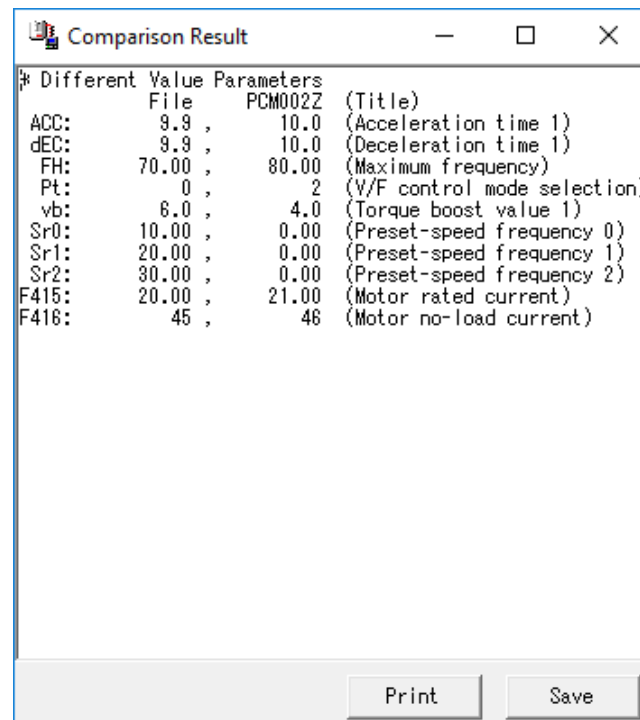


Figure 3-23 File Comparison result screen

3.2.8. Select / Select Clear

Parameters with the cursor presented or parameters in the range selected with the mouse are parameters to be selected. This function can be performed only when cursor is in the "Set Val." column.

The background color of cells for the parameter setting values selected are displayed in blue. Following functions are target selected parameters.

- Selected Parameter Import
- Selected Parameter Export
- Hex.
- Dec.
- Default setting

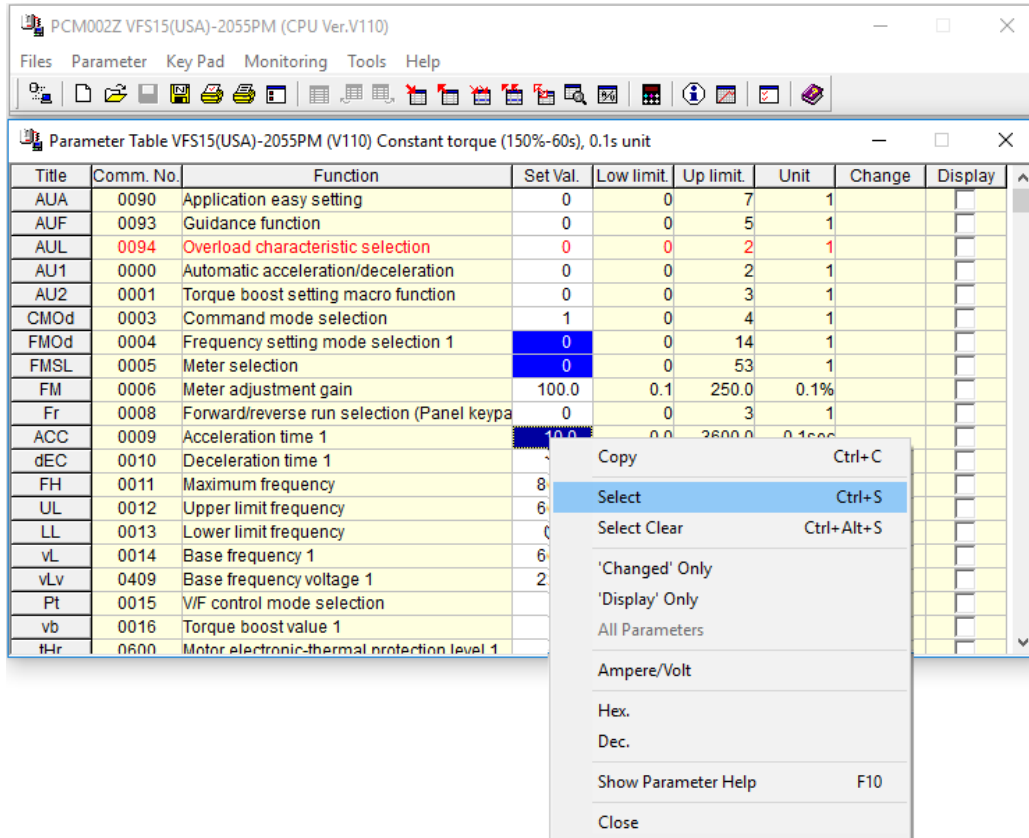


Figure 3-24 Select / Select Clear screen

If it is executed again, Select is cleared only that parameter.

To clear, execute Select Clear. The Select Clear is executed for all selected parameters.

3.2.9. 'Changed' Only

Only the parameters different from the default setting are displayed in the table. All parameters will be displayed by executing either 'Changed' Only again or All Parameters.

* In case of both ["Changed" Only] and ["Display" Only] are selected, Parameters that satisfy both conditions of ["Changed" Only] and ["Display" Only] are displayed.

3.2.10. 'Display' Only

The parameters being performed with checking on Box of 'Display' are only displayed. If save the parameter with this condition to the file, and open the saved file, only checked 'Display' parameters are displayed.

* In case of both ["Changed" Only] and ["Display" Only] are selected, Parameters that satisfy both conditions of ["Changed" Only] and ["Display" Only] are displayed.

* *Tools, Environment Options, File/Parameter* tab, the check box of *Prioritize 'Display' information on the DSP file* is checked, the saved 'Display' parameter setting of the *.dsp file has higher priority than the 'Display' setting of the parameter file. (Refer to 3.5.1.2)

3.2.11. All Parameters

The parameters being performed with 'Changed' Only or 'Display' Only are all displayed.

3.2.12. Ampere/Volt

The parameter ("Motor electronic-thermal protection level" etc.), "Set Val. ", "Low limit.", "Up limit." and "Unit" for Ampere/Volt function of the drive on *Parameter Table* are displayed in the Ampere or Volt unit. And the setup value can be set by *Ampere/Volt* unit. The value that is under internal minimum setting unit is rounded.

3.2.13. Hex. / Dec.

The selected parameters only are displayed in hexadecimal codes or decimal codes. When entering in hexadecimal codes, enter a "h" first, then enter setting values in hexadecimal codes. The value to be entered in hexadecimal codes is a value divided by the minimum setting unit.

Example: When setting the acceleration time to 10.2 seconds by VFS15

Since the minimum setting unit is 0.1, an expression is $10.2 / 0.1 = 102$

When this is converted into hexadecimal codes, the product becomes 66, so the value to be entered is "h66".

* For VFA7, the minimum setting unit of the acceleration time is 0.01, so, the product becomes "h3FC".

3.2.14. Default setting

Default setting of the selected parameters are displayed. To be effective the setting value, export the parameter to the inverter.

'Default' column can be added in the parameter table and displayed each parameter default setting value. (Refer to 3.5.1.2 File/Parameter)

3.2.15. Find

When the [**Find**] button is clicked, the find window below is opened. So, enter character strings to be found, and click on the [**Find Next**] button. If a parameter matching the character string is found, the cursor will move to the applicable parameter. Items to be found are either a function name or a communication number.

If the cursor is on a cell in the *Parameter Table*, the content of that cell will be automatically displayed in “Find what” when the find window is opened.

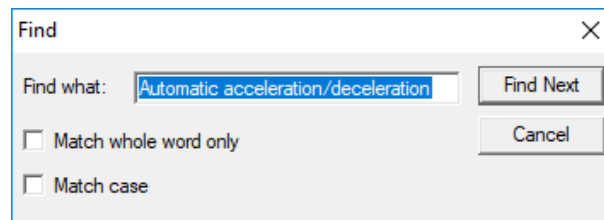


Figure 3-25 *Parameter | Find* screen

3.2.16. Parameter Information

If a parameter information file is prepared, individual parameter information can be displayed. Double-click on the *Parameter Table* can also implements the same function.

3.2.17. Other functions

(1) Popup menu

Click on the *Parameter Table* with the mouse right button, a popup menu will be displayed.

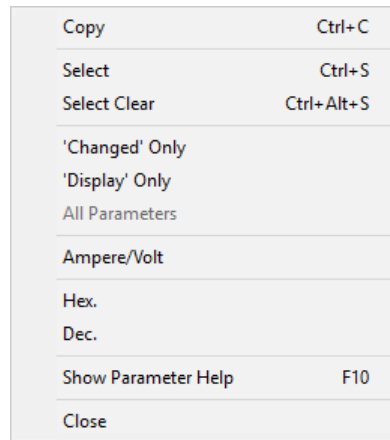


Figure 3-26 *Parameter* popup menu screen

(2) Column width change

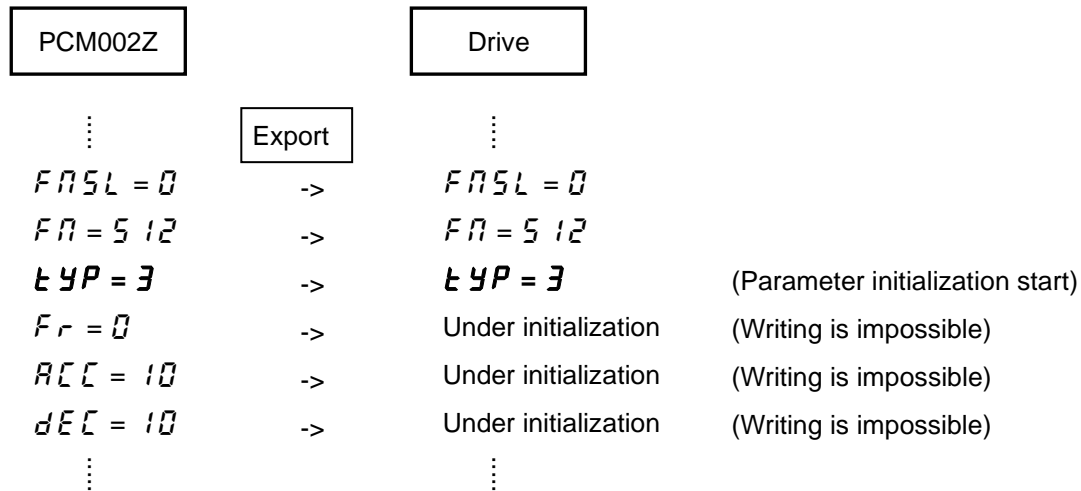
Drag the right-side border line of fix cells (the cells in gray on the top of the column) until you get the desired width.

Title	Comm. No.	Function	Set Val.	Low limit.
AUA	0090	Application easy setting	0	0
AUF	0093	Guidance function	0	0
AUL	0094	Overload characteristic selection	0	0
AU1	0000	Automatic acceleration/deceleration	0	0
AU2	0001	Torque boost setting macro function	0	0
CMOd	0003	Command mode selection	1	0
FMOd	0004	Frequency setting mode selection 1	0	0
FMSL	0005	Meter selection	0	0
FM	0006	Meter adjustment gain	100.0	0.1
Fr	0008	Forward/reverse run selection (Panel keypa	0	0
ACC	0009	Acceleration time 1	10.0	0.0
dEC	0010	Deceleration time 1	10.0	0.0

Figure 3-27 Column width change

3.2.18. Precautions when exporting

Exporting process with the All parameters or two or more parameters selected is executed in the order of communication numbers. Therefore, individually Export the parameter setting value (“*tYP = 3*”) by which the inverter communication process becomes temporary impossible at the time of exporting process.



3.2.19. AUL/F519

To edit the drive parameters that have parameter AUL/F519, select AUL/F519 settlement of the parameter on the start screen. AUL/F519 cannot be edited in the parameter table screen.

Operate in each following case.

1) When change parameters on the PC. (PCM002Z is not connected with the drive.) .

When change parameters on the PC, select the settlement of AUL/F519 parameters to set up on the start screen in advance.

2) When **Export Parameter** made in above 1) to the drive

The following Confirmation Message screen is displayed when AUL/F519 setup value of PCM002Z is different from a setup of the drive. In this case, select AUL (PCM)→AUL (INV) or F519(PCM)→F519 (INV) in accordance with indication of Confirmation Message screen and setup the drive in accordance with PCM002Z setting. After that, execute **Export Parameter**.

3) When **Import Parameter** and change parameter value.

Select the settlement of the AUL/F519 to same value of the drive on the start screen when you make the PCM002Z parameter data from the drive parameter. The following Confirmation Message screen is displayed when the selection of the start screen is different from the settlement of the AUL/F519 parameter set up of the drive. In this case, select AUL (INV)→AUL (PCM) or F519 (INV)→F519 (PCM) in accordance with Confirmation Message screen, and setup PCM002Z in accordance with the drive setting. On this occasion, parameters related to AUL/F519 are initialized.

After that, carry out **Import Parameter** and copy the parameter setup of the drive to PCM002Z parameter table.

For the details of each function of AUL/F519, refer to the instruction manual of the applicable model.

These parameters value in the parameter table is indicated with 0.

Present setup condition is indicated in the title of the parameter table.

Title	Comm. No.	Function	Set Val.	Low limit.	Up limit.	Unit	Change	Display
AUA	0090	Application easy setting	0	0	7	1		
AUF	0093	Guidance function	0	0	5	1		
AUL	0094	Overload characteristic selection	0	0	2	1		
AU1	0000	Automatic acceleration/deceleration	0	0	2	1		
AU2	0001	Torque boost setting macro function	0	0	3	1		
F512	0512	Acceleration/deceleration 3 pattern	0	0	2	1		
F513	0513	Acceleration/deceleration 2 and 3 switching	0.00	0.00	60.00	0.01Hz		
F515	0515	Deceleration time at emergency stop	10.0	0.0	3600.0	0.1sec		
F519	0519	Setting of acceleration/deceleration time un	0	0	2	1		
F590	0590	Shock monitoring	0	0	3	1		
F591	0591	Shock monitoring trip/alarm selection	0	0	1	1		

Figure 3-28 AUL and F519 in Parameter Table screen

When the setup value of the drive was different from the condition of the PCM002Z startup screen setting, the alarm screen is indicated at the time of the first communication to make PCM002Z parameter table correspond to the drive parameter table (Upper / Lower limit value and Unit of the parameters).

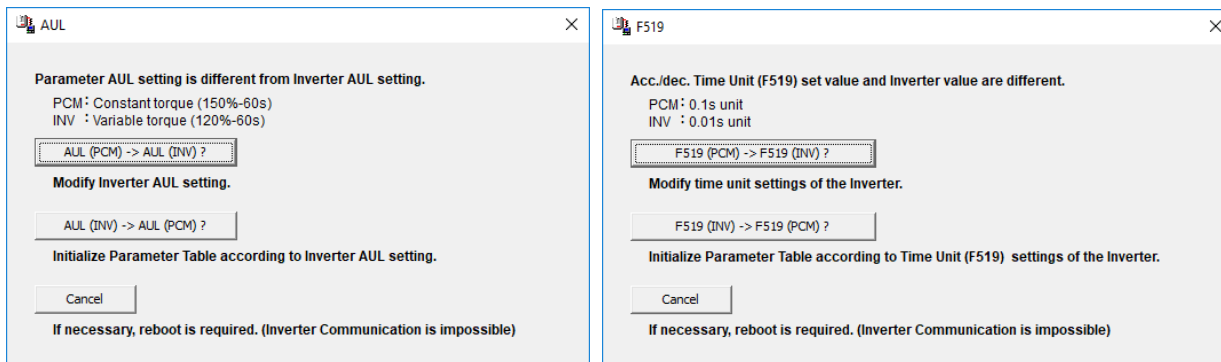


Figure 3-29 Confirmation Message screen

AUL (PCM) →AUL (INV)

Setup AUL of the drive is done in accordance with Setup of AUL of PCM002Z.

Do *Parameter / Parameter Export*, when you export PCM002Z parameter list to the drive.

AUL(INV)→AUL(PCM)

A parameter list is initialized in accordance with Setup of AUL of the drive.

Parameters related to Setup of AUL are initialized.

Do *Parameter / Parameter Import*, when you import the drive parameters to PCM002Z parameter list.

F519(PCM)→F519(INV)

Setup of F519 of the drive is done in accordance with a setup of F519 of PCM002Z.

Parameter / Parameter Export, when you export PCM002Z parameter list to the drive.

F519(INV)→F519(PCM)

A parameter list is initialized in accordance with Setup of F519 of the drive.

Parameters related to Setup of F519 are initialized.

Do *Parameter / Parameter Import*, when you import the drive parameters to PCM002Z parameter list.

Cancel

When select Cancel, the parameter image of the drive is different from the parameter image of PCM002Z. PCM002Z changes communication buttons to disable (color is gray). To communicate with the drive, the restart of PCM002Z is required.

⚠ Caution	
! Mandatory	<p>▼ when parameters related to F519 of the parameter list are changed from the default setting value, and when the operation of F519 (INV)→F519 (PCM) is done, and if Import Parameter is not done, then only the unit of the setup value is changed.</p> <p>Ex. ACC setup value becomes ACC=0.99 sec when ACC setup value is ACC=9.9 sec and F519 is changed from F519=2 (0.1 sec. unit) to 1 (0.01 sec unit).</p>

Refer to the instruction manual of each drive for the related parameters.

3.3. Key Pad

Same operations as for the inverter operation panel can be executed on the computer. When Frequency setting mode selection and Command mode selection are set to Panel Key pad, key pad on the PC can control the drive run and stop.

To quit the operation, click on the “Close” of the right below of the operation panel.

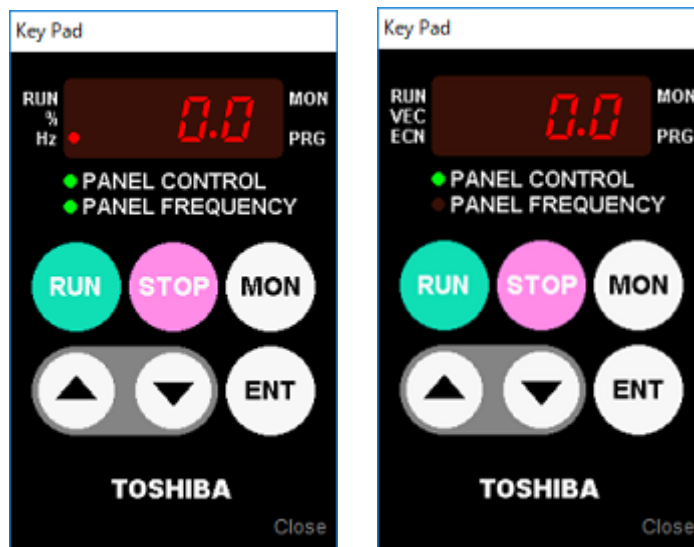


Figure 3-30 Key Pad screen (The right figure: in case of the VF-S11.)

Click on the Key Pad with the right mouse button, the popup menu will be displayed.

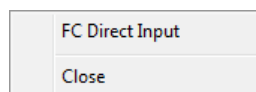


Figure 3-31 Key Pad popup menu screen

If you double click (or select *FC Direct input* from the popup menu) on the LED display, you can directly enter the operation frequency command by keys.

After entering any frequency, specify by pressing the **Enter** key. (In this case, it is necessary that the setting of the “**Frequency setting mode selection (F_{FD})**” parameter of the inverter be “**Operation panel**”.)

Press the **Enter** key, then the Operation Panel display will appear after “F_⏏” is alternatively displayed. If the **Esc** key is pressed while the operation frequency command value is being entered, the input will be cancelled and the Operation Panel display will appear.

* The setting value written to the inverter by using *Key Pad* is not reflected on the *Parameter Table*. Execute *Parameter Import* at request.

* When command “RUN” command from Key Pad and pasts 10sec with below condition, the inverter may detect Key Pad connection loss (E_{rr} 9). Not need to detect Key Pad connection loss, the function can be disable by the parameter setting. Refer to the inverter instruction manual.

- When command “RUN” command from Key Pad and close Key Pad window.
- Holding Key Pad with the right button of mouse.
- Stay Key Pad popup menu screen is open.

3.4. Monitoring

3.4.1. Inverter Info.

The information of the connecting inverter is displayed. When the connected drive's type data and capacity data are not installed to PCM002Z, "Err" is displayed.

* The value of "CPU2 Version" is displayed by the hexadecimal number.

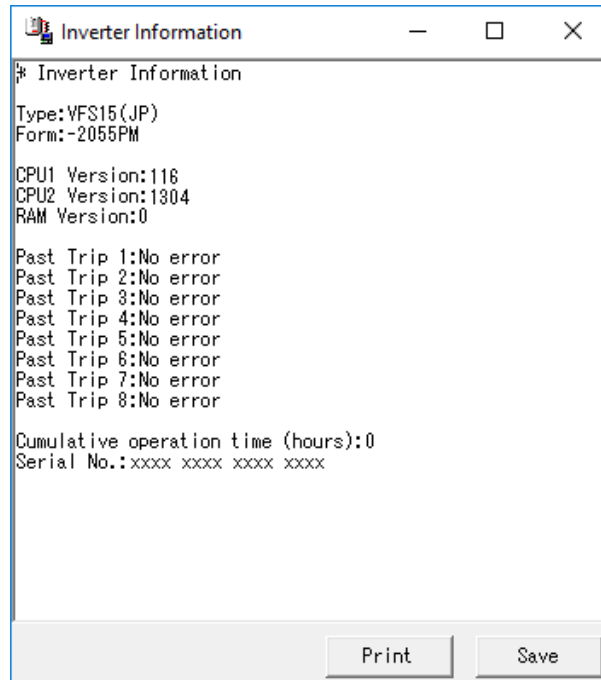


Figure 3-32 Monitoring |Inverter Info. screen

3.4.2. Monitoring

Up to 10 parameters can be displayed in graphs on the inverter status monitor.

* To monitor up to 10 parameters, check out “Display Alarm” and “Display Trip” check box in *Tools | Environment option | Key Pad/Monitor.*

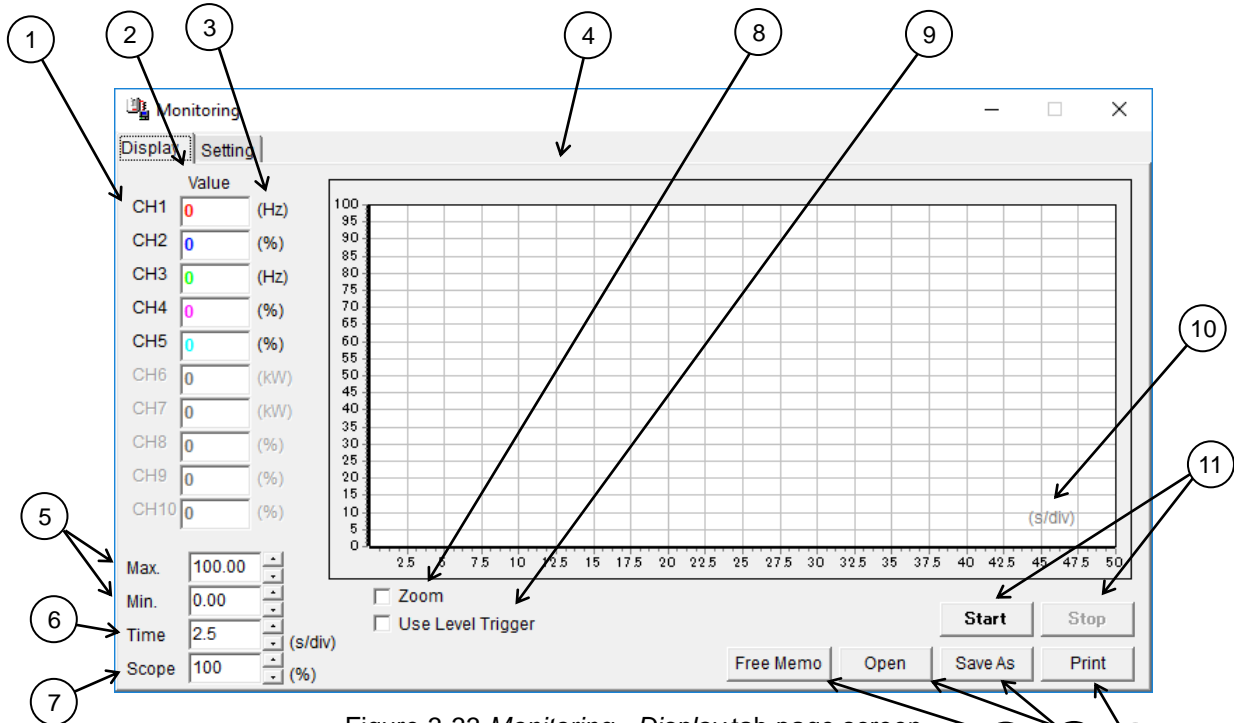


Figure 3-33 Monitoring - Display tab page screen

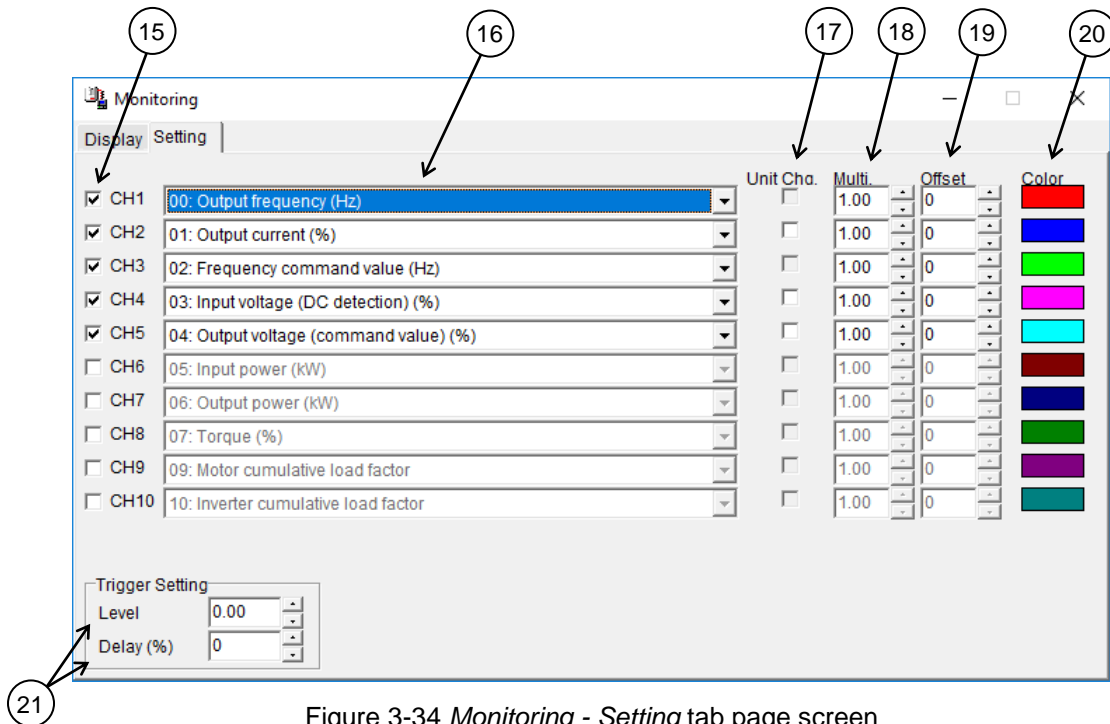


Figure 3-34 Monitoring - Setting tab page screen

Screen description

1) Monitor Channel

When "Use level trigger (9)" is checked, click to choose the trigger source. Chosen channel (CH) is displayed in a red bold character.

2) Monitor value

The monitored value of the inverter is displayed with the selected monitor item (14). The color of characters shows the color of the graph. When "Unit Chg. (15)" in a "Setting" tab page is checked, it changes and displays on the value for which it was suitable.

3) Unit of the monitor value

The unit of the monitor value is displayed. When "Unit Chg. (15)" is checked, the unit is changed to "A (ampere)" or "V (volt)."

4) Monitoring screen

The value read from the inverter is displayed graphically. Even when " Unit Chg. (15)" is checked, the graph indication of the value before unit conversion is given to a monitoring screen.

Move the mouse while clicking the right button to make it scroll.

If you click on the graph with the left button, details will be displayed.

* As for the displayed data, neither "Multi. (16)" nor "Offset (17)" is added.

* When the communication error occurs, the number of errors is displayed on the upper right of the monitor screen.

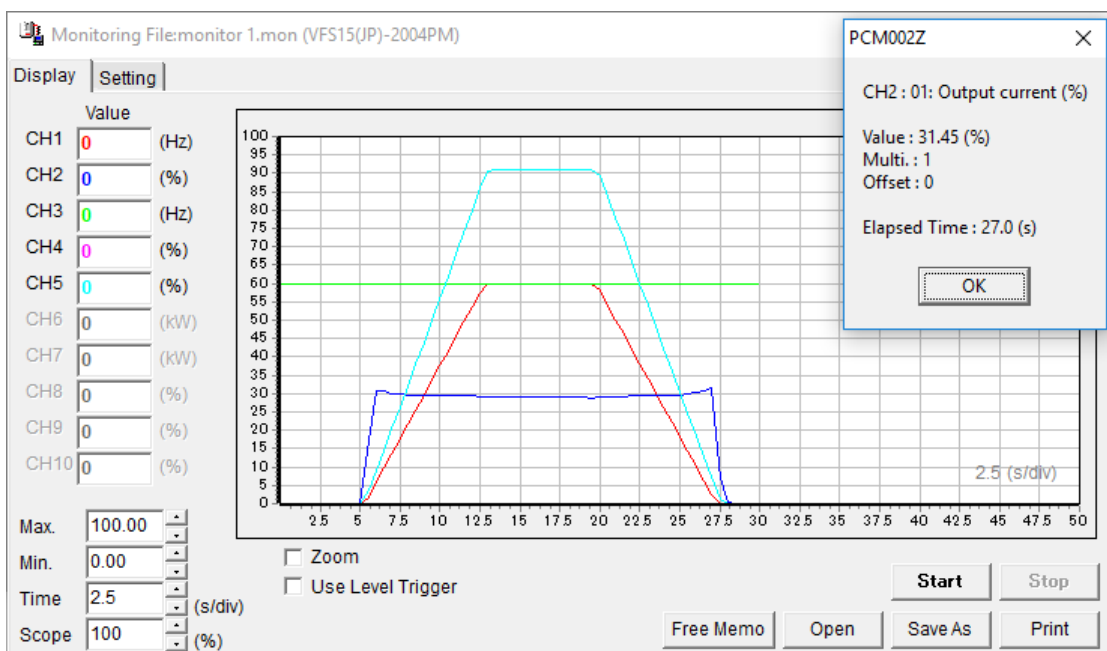


Figure 3-35 Monitoring - Display screen

5) Min., Max.

The Y-axis minimum and maximum of graph are set up. Adjustment range is -500 to 500.

6) Time axis setting

The maximum value of the adjustment range is 30s/div. The minimum value changes with communication rate and number of selected CHs (13). The minimum time-axis setting value and the maximum number of samplings when it can communicate become as shown in the following table.

* Depending on the conditions, such as PC processing speed, it may become longer than the following table.

* Max. number of samplings can be changed at *Environment Options* (Section 3.5.1.3.)

Number of CH	Baud rate (bps)								Max. Number of Samplings
	1,200	2,400	4,800	9,600	19,200	38,400	57,600	115,200	
1	1.3	0.7	0.5	0.3	0.3	0.2	0.2	0.2	3000
2	2.6	1.4	1	0.6	0.6	0.4	0.4	0.4	1500
3	3.9	2.1	1.5	0.9	0.9	0.6	0.6	0.6	1000
4	5.2	2.8	2	1.2	1.2	0.8	0.8	0.8	750
5	6.5	3.5	2.5	1.5	1.5	1	1	1	600
6	7.8	4.2	3	1.8	1.8	1.2	1.2	1.2	500
7	9.1	4.9	3.5	2.1	2.1	1.4	1.4	1.4	429
8	10.4	5.6	4	2.4	2.4	1.6	1.6	1.6	375
9	11.7	6.3	4.5	2.7	2.7	1.8	1.8	1.8	333
10	13	7	5	3	3	2	2	2	300

* Gray: Default Value

7) Scope

The scale of the monitoring screen (4) is displayed and set up. Changing this, the graph can be stored in one screen or can be expanded.

8) Zoom

When this is checked, the graph can be expanded by clicking the left button in a monitoring screen (4), and can be reduced by a right button click.

* The data detailed display function and scroll function are unavailable.

9) Use level trigger

(Refer to 3.4.2.3.)

10) Time axis

When [Open] button is clicked and *.mon file is opened, the time-axis at the time of the file last save is displayed. Change of "time axis setting (6)" or CH selection (13) displays the same value as a time axis setting.

11) Start/Stop

When [Start] button is clicked, starts to read the selected monitor item (14) from the inverter.

When [Stop] button is clicked, stops reading.

* The menu items which disturbs the communication are unavailable during monitoring.

12) Free Memo

When [Free Memo] button is clicked, Memo window is open. Statements in Free Memo are printed in Preview window and output to Printer.

Do not use following letters, "\", "[", "]"

13) Open / Save As

(Refer to 3.4.2.1.)

14) Print

(Refer to 3.4.2.2.)

15) CH selection

The checked monitor items (14) are monitored by graph.

* *Environment Options* | "Display Alarm" and "Display Trip" are respectively treated as one of the monitor items. Therefore, when these are checked, selectable CHs become 9 or 8.

For example, if "Display Alarm" and "Display Trip" on *Environment Options* are checked with 5CHs on Monitoring selected, 7CHs will be monitored.

(The minimum setting value of a time-axis also becomes the same as the time of 7CH selection).

16) Monitor item

Select the monitor items from down list in the inverter status monitors.

17) Unit selection

The monitoring value is converted and displayed on voltage (V) and current (A). When the selected item is not convertible or CH selection (13) is not checked, this selection becomes unselectable.

18) Multiplication

The monitoring value can be multiplied by the value set up here, and indicated on the graph.

When this value is changed, it is reflected to the graph except during operation.

The adjustment range is 0.1 to 10.

19) Offset

The monitoring value can be added to the value set up here, and indicated on the graph.

When this value is changed, it is reflected to the graph except during operation.

The adjustment range is -500 to 500.

20) Graph color

The displayed graph color is set up. When color sample is double-clicked, the color dialog will be displayed. Select any color.

21) Trigger level/Trigger delay

(Refer to 3.4.2.3.)

3.4.2.1. Open/Save as

The displayed graph and the opened file can be saved/read (only *.mon format) in the following file formats. The opened file name is displayed on the title bar of the *Monitor*.

1) "PCM002Z Monitor Data (*.mon)"

This save format is only for PCM002Z, graph can be displayed again to the monitoring screen with the [Open] button of a "Display" tab page.

If the file that was saved by the different inverter type is chosen, it cannot be opened.

Even if it is displayed in voltage (V) or current (A) unit by unit conversion, data is saved in %unit.

Please clear the unit conversion check box manually when read the file.

(The file saved by PCM001Z also can be opened. But the file saved by PCM002Z V110 or later cannot be opened by V109 or older version.)

2) Monitor Data (*.csv)

The csv format file can be opened with a spreadsheet application.

* As for the saved data, neither "Multi. (16)" nor "Offset (17)" is added.

* In V1.05 or later version, when checked [Unit selection] button, the monitoring value is converted voltage (V) and current (A), and saved as it's (V) or (A) unit.

3) Monitor Picture (*.bmp)

The currently displayed graph on the monitoring screen is saved in picture form. The saved picture corresponds to the part currently displayed on the screen. When you need to record a given area, please scroll or zoom so that the required area is displayed on the screen. Moreover, when you need to save the whole graph, please save with "Scope" set to "100 (%)".

Save format can be chosen from the following:

- bmp format : Color information is not lost by compress but the file size is large.
- jpg format : File is made smaller using compression but some color information is lost.
- wmf format : This format is aimed at expansion/reduction.

In case of Windows 10, selected monitor parameter number are not displayed.

These files can be read with image-processing application.

3.4.2.2. Print

The monitor picture is printed. The image to print can be checked on the preview screen.

Clicking on **[Print]** button starts printing. Paper size is A4 and the orientation is portrait by default.

Those parameters can be set in *File | Page Setup* (refer to 3.1.5).

* As for the printed data (minimum value, maximum value, start value, and last value) of each graph, neither "Multi. (16)" nor "Offset (17)" is added.

* When the trigger is not used, "-" is displayed to "Trigger Source" and soon.

* End Time setting value of Time range should be plus polarity value.

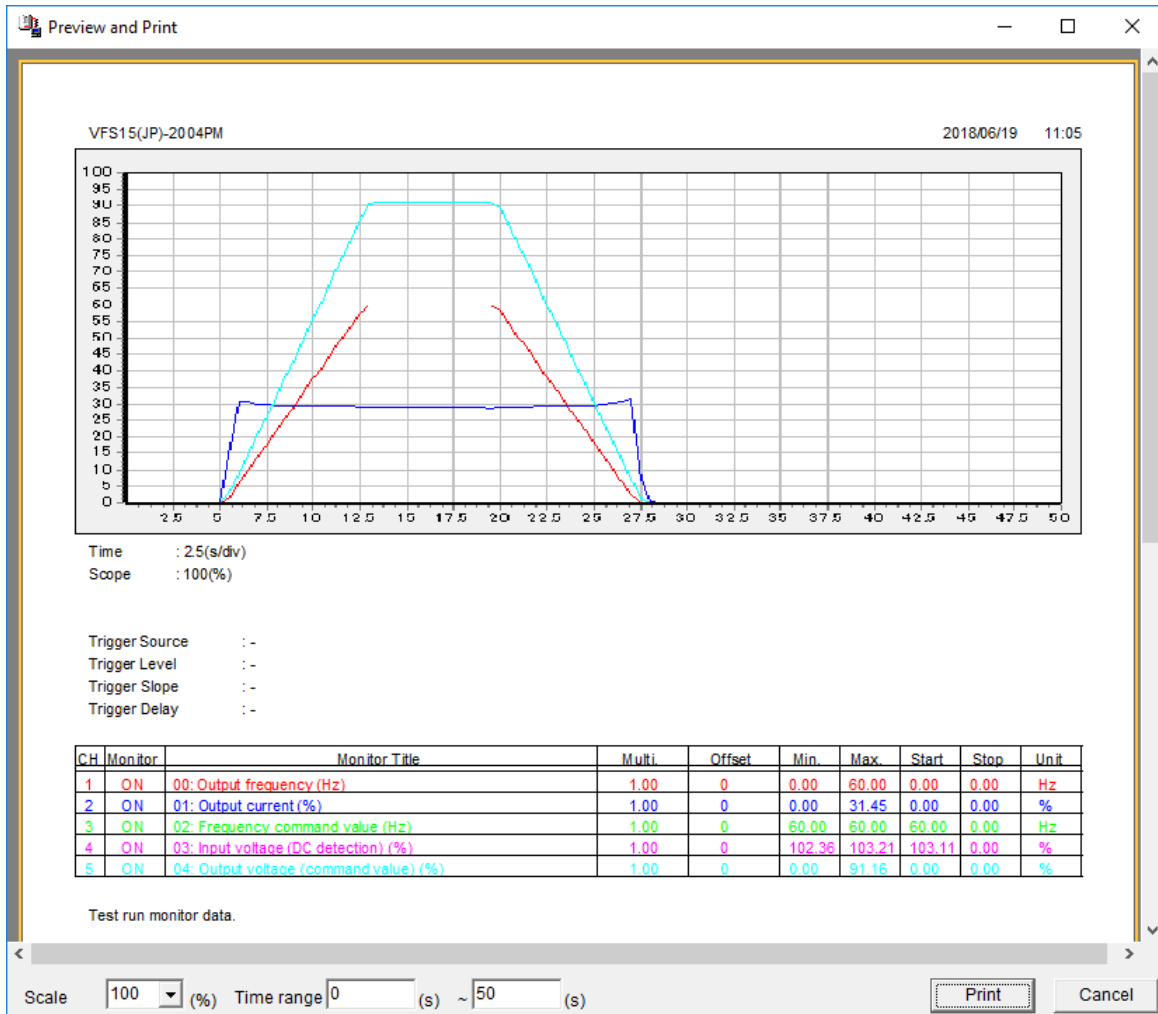


Figure 3-36 Monitoring | Print screen

3.4.2.3. Use level trigger

If "Use Level Trigger (1)" of the "Display" tab page is checked, a trigger level marker (5), "Source (2)", and "Slope (3)" will be displayed, and trigger source CH (4) is displayed in red.

Trigger source: This can be chosen by clicking "CH (4)" or double-clicking "Source (2)".

Trigger level: This can be set dragging the trigger level marker (5) with the mouse, or is set up using "Trigger Setting" - "Level (Figure 3-34 (19))".

Trigger slope: This changes as follows when double-clicking the "Slope (3)".



If the [Start] button is clicked, the graph will be displayed after the monitored value of the trigger source CH exceeds trigger level (when a trigger slope is on "standup").

Trigger delay is the rate to the maximum samplings by the number of selected CH.

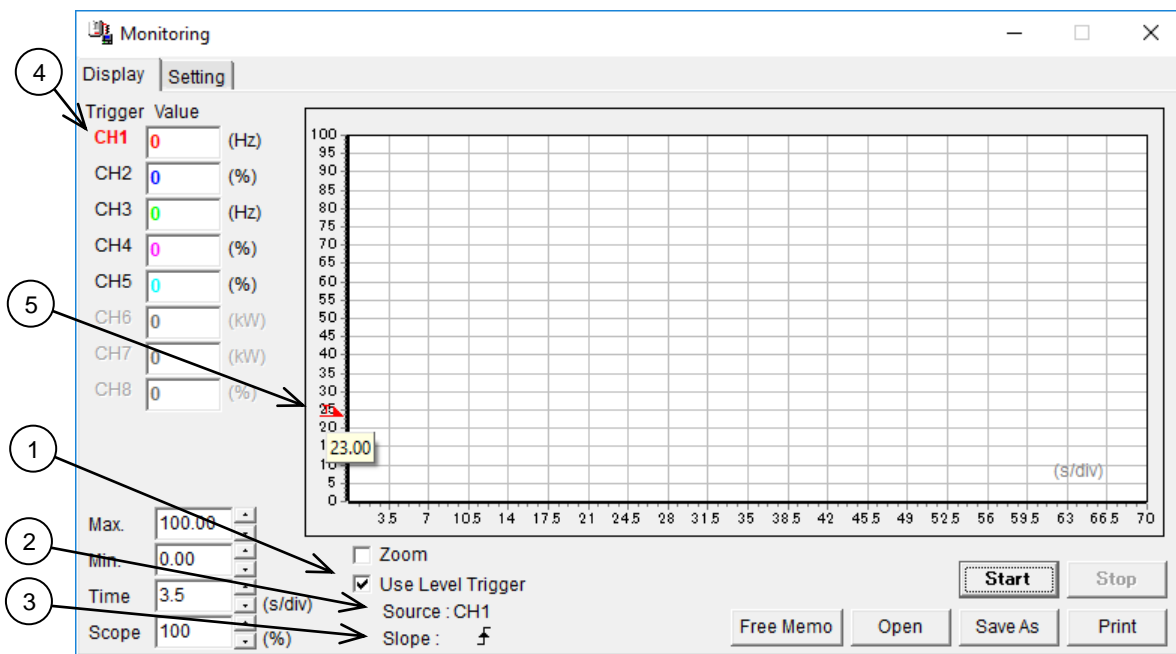


Figure 3-37 Monitoring - Display screen

When checking *Environment Options* - "Continuous", "Continuous Monitoring" is displayed on the position of "Use Level Trigger" (Refer to 3.5.1.3).

3.4.2.4. Continuous Monitoring

Continuous monitoring is possible up to 24 hours max. Data is saved as csv file format. When checking *Environment Options* - “Continuous”, “Continuous Monitoring (1)” is displayed on the position of “Use Level Trigger” (Refer to 3.5.1.3).

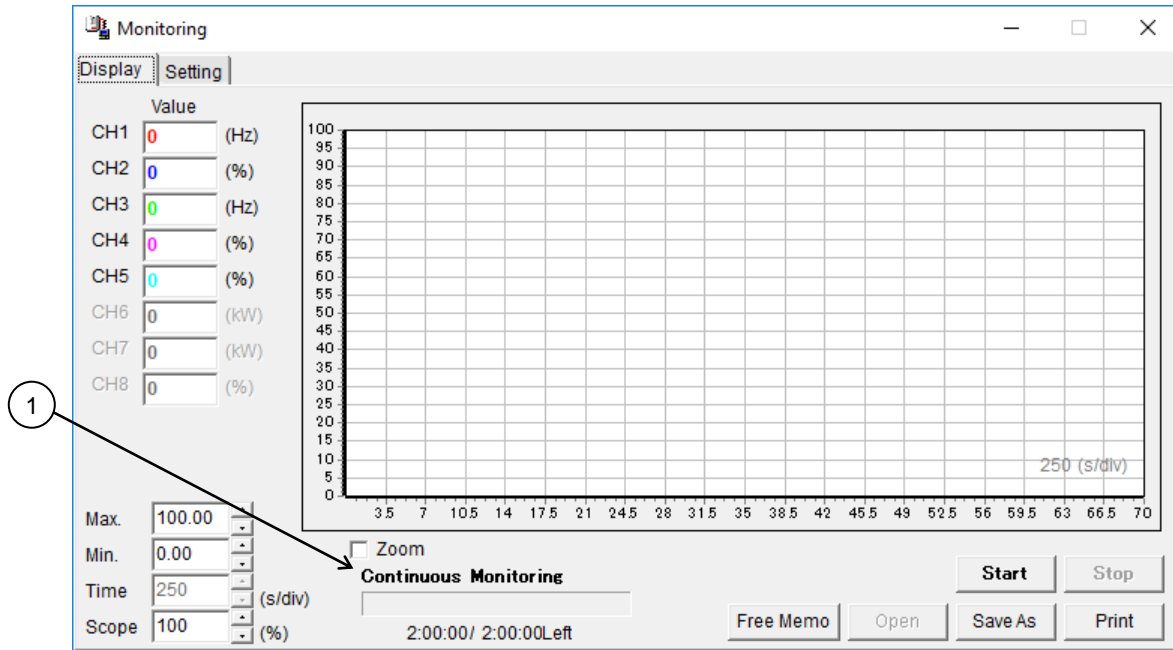


Figure 3-38 Monitoring - Continuous Monitoring screen

3.5. Tools

3.5.1. Environment Options

PCM002Z option setup is executed.

3.5.1.1. Startup/Comm.

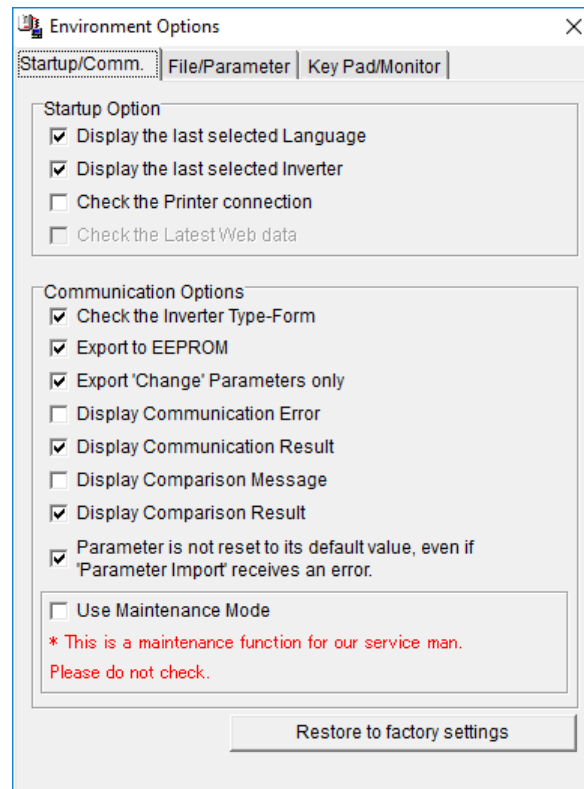


Figure 3-39 *Environment Options - Startup/Comm.* tab page screen

[Restore to default settings]

All items in "Startup/Comm.", "File/Parameter" and "Key Pad/Monitor" pages of *Environment Options* return to an initial value.

Startup Options

(1) Display the last selected Language

When the check box of this item is checked, the lastly selected language automatically appears when PCM002Z is started. If not checked, Japanese language is selected.

(2) Display the last selected Inverter

If the check box of this item is checked when PCM002Z is started, the previously selected drive is automatically selected regardless of whether communication is enabled or disabled (COM1 - 15). If this check box is not checked, the system examines ports on the PC when started and if a port is available, the system checks the communication settings on the inverter and displays the corresponding drive type. (It may take about 1 minute.)

* It cannot identify AN, WN or WP.

(3) Check the Printer connection

If the check box of this item is checked when PCM002Z is started, if no printer is available, the menu about printing becomes unselectable.

If this check box is not checked, the printing menus are enabled regardless of whether a printer is available.

Communication Options**(1) Check the Inverter Type-Form**

When the check box of this item is checked, connected inverter type-form is checked at the time of *Parameter Import / Export / Comparison* selection. If it differs from the PCM002Z side, a message is displayed.

* Type and Form are separately checked, and a message is displayed even when only Forms differ.

* The interface logic specification of the drive ("WN" etc.) is not investigated. Therefore, "Different Capa inverter is connected" might be displayed.

* This item is checked again when PCM002Z is re-executed even if the check was removed.

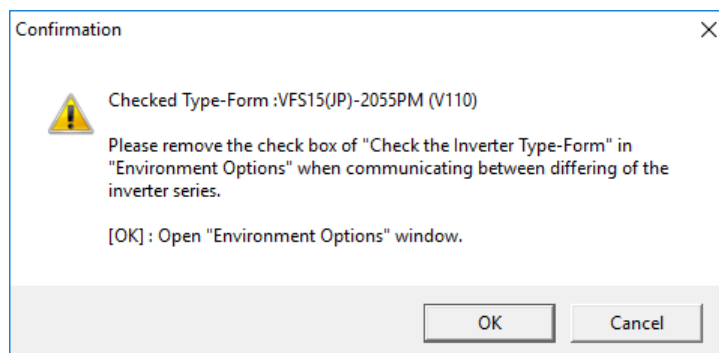


Figure 3-40 Check Inverter Type-Form result screen

(2) Export to EEPROM

If *Parameter Export* and *Selected Parameter Export* are executed with this item checked, the setting value will also be exported to RAM and EEPROM. (The setting value written will be retained even if the inverter power supply is turned off.)

If a check is cleared from this item and "TOSHIBA protocol" is selected, the setting value will be exported only to the RAM of the inverter, consequently, the setting value exported will be lost when the inverter power supply is turned off.

If "MODBUS-RTU protocol" is selected, the setting value will be exported to RAM and EEPROM regardless of this "Export to EEPROM" item check.

(3) Export 'Change' Parameters only

If *Parameter Export* is executed with this item checked, the parameters only changed from the default setting will be exported to the inverter. If this item is not checked, all parameters will be exported to the inverter.

(Reference article Precautions when exporting (Section 3.2.18).)

(4) Display Communication Error

If this item is checked, the message will be displayed if a communication error occurs at the time of *Parameter Import / Export / Comparison*. If this check box is not checked, even if the communication error occurs, the message is not displayed.

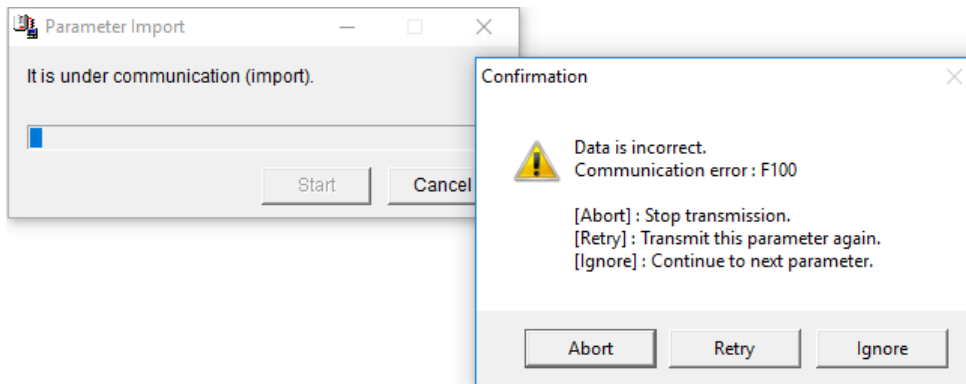


Figure 3-41 Communication error screen

(5) Display Communication Result

If this item is checked, the communication result is displayed *Parameter Import / Export / Comparison* finished.

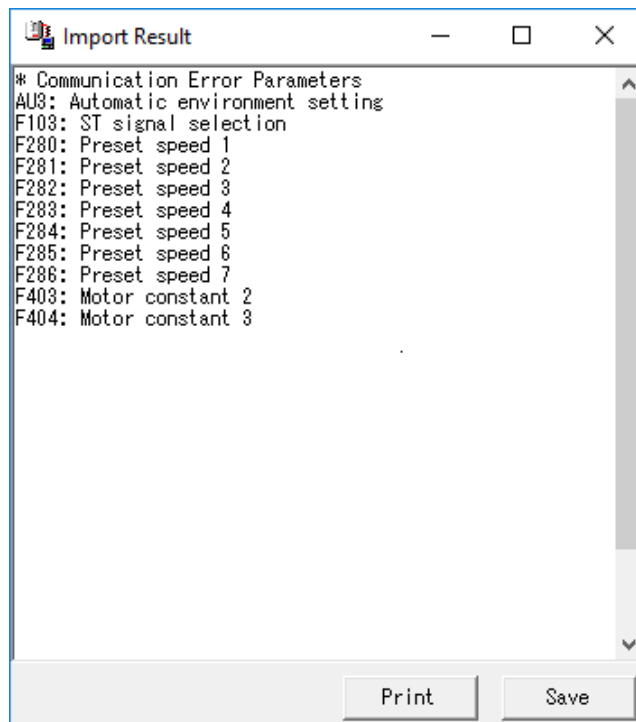


Figure 3-42 Display Communication Result screen

(6) Display Comparison Message

If this item is checked, when the value on PCM002Z differs from the value on the inverter at the time of *Parameter Comparison*, the message will be shown.

(7) Display Comparison Result

If this item is checked, the communication result is shown by list at the time that *Parameter Comparison* finishes (refer to 3.2.6).

(8) Use Maintenance Mode

When this box is checked, *Parameter Import / Export / Comparison* will be done for the inverter control parameter area as well as for the user parameter area. When the check box of this item is not checked, *Parameter Import / Export / Comparison* will be done for the user parameter area (parameters described in the Inverter instruction manual).

* This is a maintenance function for our service man. Please do not check.

However, only the user parameter area (described in the inverter instruction manual) will be displayed on the *Parameter Table* display.

3.5.1.2. File/Parameter

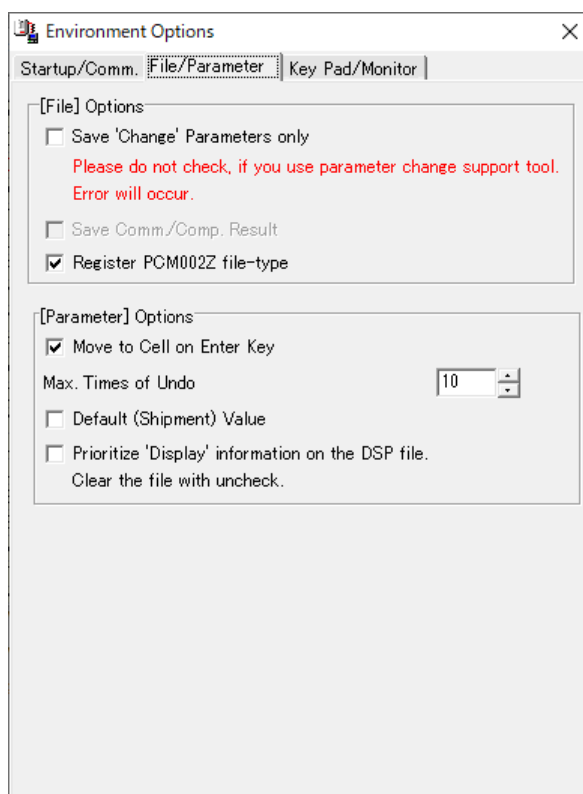


Figure 3-43 *Environment Options - File/Parameter* tab page screen

[File] Options

(1) Save 'Change' Parameters only

If this item is checked, only the parameters changed from the default setting are saved (“**PCM002Z Parameter Data (*.pcm)**”). If this item is not checked, all parameters will be saved in files.

(2) Save Comm./Comp. Result

If this item is checked, the parameters skipped by *Parameter Import / Export*, or Result of *Parameter Comparison* will automatically be saved.

(Reference article *Parameter Import / Parameter Export / Parameter Comparison* (Section 3.2.4 / 3.2.6).)

This function can be selectable at [Tools], “Environment Options” Tab, “Communication Options”, “Display Communication Result” is not checked and “Display Comparison Result” is not checked.

(3) Register PCM002Z file-type

If this item is checked, *.pcm format file is related with PCM002Z. Double-clicking on a *.pcm file in the *Windows Explorer*, PCM002Z will start and open the saved inverter type-form and CPU version. If this check is unchecked, correlation will be canceled.

[Parameter] Options

(1) Move to Cell on Enter key

If this check box is cleared, the cursor will not move to the cell below when pressing the key in the *Parameter Table*.

(2) Max. Times of Undo

Maximum “Undo” count specification.

(3) Display the “Default” (Shipment) setting

When this check box is checked, ‘Default’ column is added in the parameter table and displayed each parameter default setting value.

Title	Comm. No.	Function	Set Val.	Default	Low limit	Up limit	Unit	Change	Display
AUA	0090	Application easy setting	0	0	0	7	1		
AUF	0093	Guidance function	0	0	0	5	1		
AUL	0094	Overload characteristic selection	0	0	0	2	1		
AU1	0000	Automatic acceleration/deceleration	0	0	0	2	1		
AU2	0001	Torque boost setting macro function	0	0	0	3	1		
CMOD	0003	Command mode selection	1	1	0	4	1		
FMOD	0004	Frequency setting mode selection 1	0	0	0	14	1		
FMSL	0005	Meter selection	0	0	0	53	1		
FM	0006	Meter adjustment gain	100.0	100.0	0.1	250.0	0.1%		
Fr	0008	Forward/reverse run selection (Panel keypad)	0	0	0	3	1		
ACC	0009	Acceleration time 1	10.0	10.0	0.0	3600.0	0.1sec		
dEC	0010	Deceleration time 1	10.0	10.0	0.0	3600.0	0.1sec		
FH	0011	Maximum frequency	80.00	80.00	30.00	500.00	0.01Hz		
UL	0012	Upper limit frequency	60.00	60.00	0.50	80.00	0.01Hz		
LL	0013	Lower limit frequency	0.00	0.00	0.00	60.00	0.01Hz		
vL	0014	Base frequency 1	60.00	60.00	20.00	500.00	0.01Hz		
vLv	0409	Base frequency voltage 1	230.0	230.0	50.0	330.0	0.1V		
Pt	0015	V/F control mode selection	0	0	0	8	1		
vb	0016	Torque boost value 1	4.0	4.0	0.0	30.0	0.1%		
tHr	0600	Motor electronic-thermal protection level 1	100	100	10	100	1%		

Figure 3-44 Environment Options – Default (Shipment) Value column

(4) Prioritize 'Display' information on the DSP file

For each Inverter Type-Form, default display parameters are selected by 'Display' parameters.

If the check box is checked and close the parameter table with checking the box of 'Display' column, the checked 'Display' parameters number is saved as an internal data for each Inverter Type-Form.

When open the parameter table of same Inverter Type-Form as New or saved parameter file, the parameter table according to the saved 'Display' setting file is displayed.

When clear the check box of this menu, and closed the parameter table, the saved 'Display' file will be deleted. Other hand, check the check box of this menu, and close the parameter table, 'Display' column setting of the parameter table are saved in an internal file.

3.5.1.3. Key Pad/Monitor

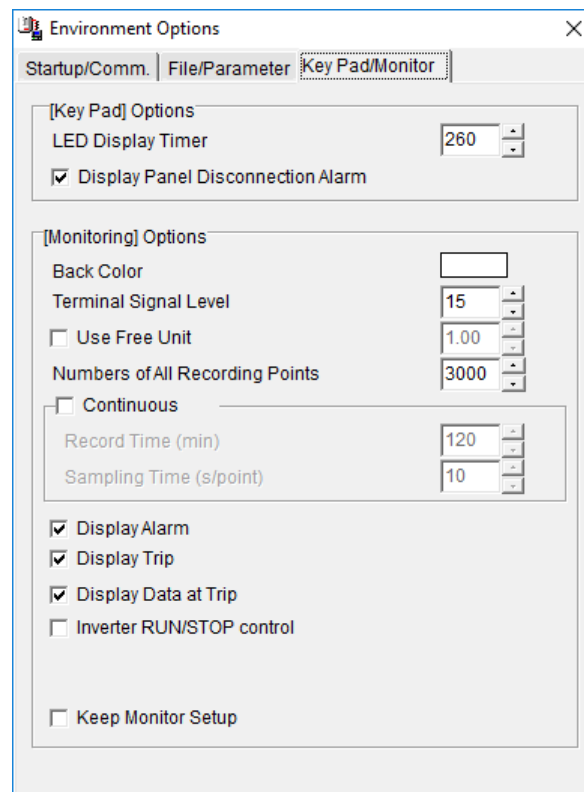


Figure 3-45 Environment Options - Key Pad/Monitor tab page screen

[Key Pad] Option(1) **LED Display Timer**

If this value is decreased, time interval of the display led blinking will be shortened.

(2) **Display Panel Disconnection Alarm**

If the alarm dialog that appears at closing operation panel is unnecessary, please remove this check.

[Monitoring] Options(1) **Back Color**

Graph background color specification. If you double click on the color sample, the color dialog box will be displayed. Select any color.

(2) **Terminal Signal Level**

Value displayed in the graph as a terminal high level.

(3) **Use Free Unit**

If this item is checked, the value displayed in the *Monitor* is multiplied by the value of this setting.

* Priority is given over "Unit Chg." in "Display" tab page.

(4) **Numbers of All Recording Points**

The number of recording points is set. The recording data is put on the memory of PC during monitoring. So, set this value with enough margins for the memory of PC.

(5) Continuous

If this item is checked to execute *Monitor*, monitoring is possible 24 hours max. Specify a recording time and a sampling time. The “**Record Time**” and the “**Sampling Time**” field will become accessible for setting.

If *Monitor* is started with this item checked, the approximate space area required to save the data read from the inverter will be displayed.

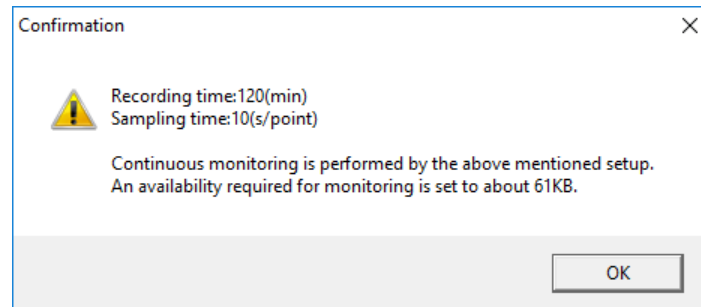


Figure 3-46 *Continuous* monitoring confirmation screen

If the [OK] button is clicked, a file selection window will appear. Specify the file where to save data, and close the window. Data are saved in a form of csv when [Start] button is pressed.

If the [Start] button is pressed after “**Maximum value**” is specified at request, data read will begin. (The value converted to the value for graph display is displayed on “**Time axis**”.)

* The data saved in a csv form are the values with “**Display Multiplication**” and “**Offset**” not added.

(6) Display Alarm

If this item is checked, the alarm is displayed on a monitoring screen when alarm is generated at the inverter side.

(7) Display Trip

If this item is checked, the trip is displayed on a monitoring screen when trip is generated at the inverter side.

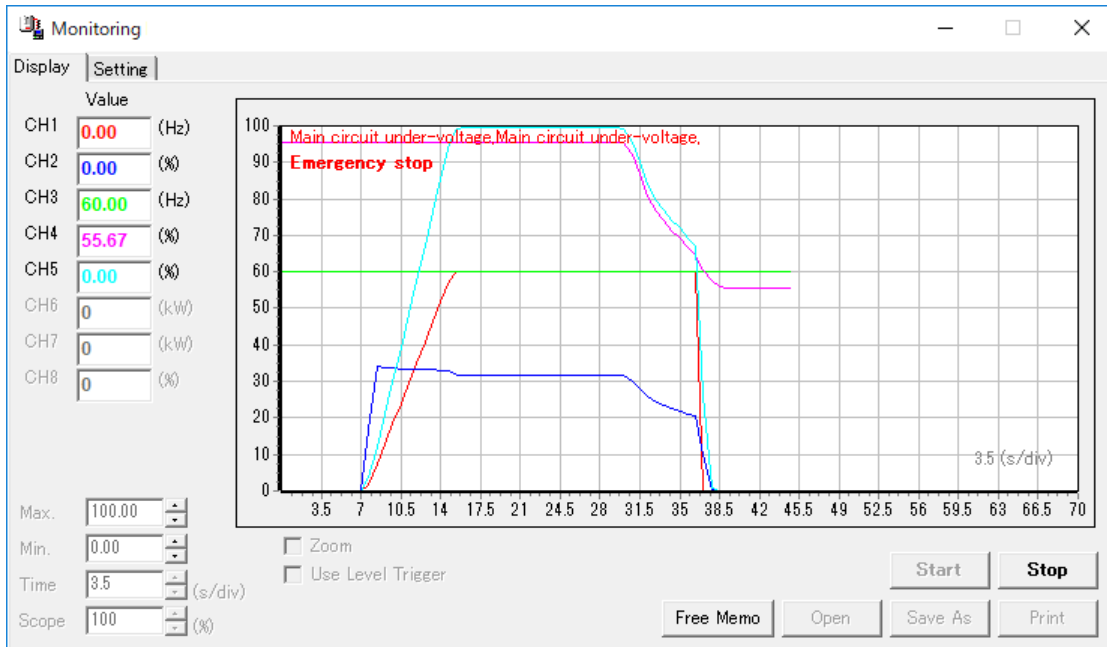


Figure 3-47 Display Alarm/Trip screen

(8) Display Data at Trip

If this item is checked, monitoring is stopped when trip is generated at the inverter side, and all monitor item, value, are displayed

When "Display Trip" is not checked, this check box is unselectable.

* The value of "CPU2 Version" is displayed by the hexadecimal number.

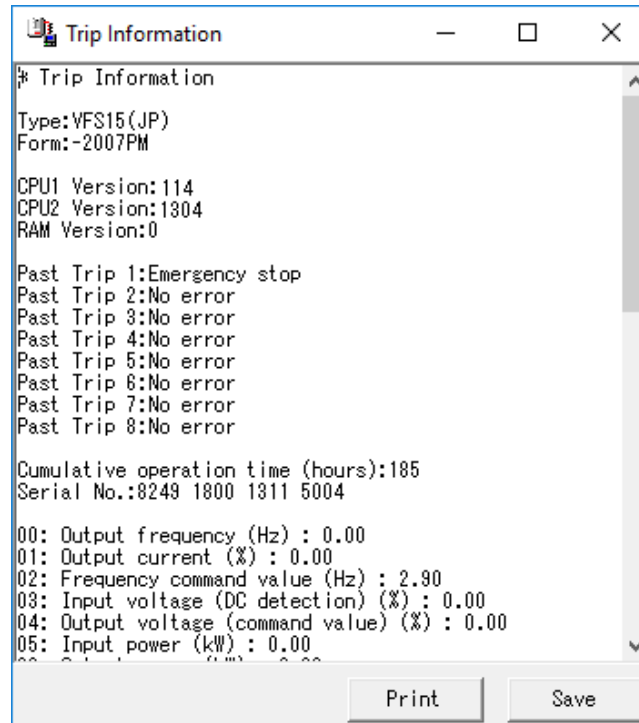


Figure 3-48 Trip information screen

(9) Inverter RUN/STOP control

If this item is checked, run/stop of inverter is possible from PC during *Monitor*.

* "Operation command mode selection" parameter of inverter needs to set "Panel".

RUN [Shift] + [F9]

STOP [F9]

(10) Keep Monitor Setup

If this item is checked, settings related to *Monitoring* (setting contents of *Environment Options* and *Monitoring*) will be saved, and monitoring can be performed with the same setting at the next setup.

3.5.2. Add / Remove type

Each model name indicated in this screen shows the model which it is added to and which can be deleted. And, the model that a check is on the check box shows the model which it has already been added to the selectable model.

(1) The addition of the model and deletion

Uncheck the check box of the model name, and click on the "OK" button when you delete a model.

And, put a check in the check box of the model name, and click on the "OK" button when add a model.

(2) The addition of the model which specified CPU version and deletion

Uncheck of the check box of the model name (CPU version), and click on the "OK" button when delete the specific CPU version data of each model.

And, check the check box of the model name (CPU version), and click on the "OK" button when add it.

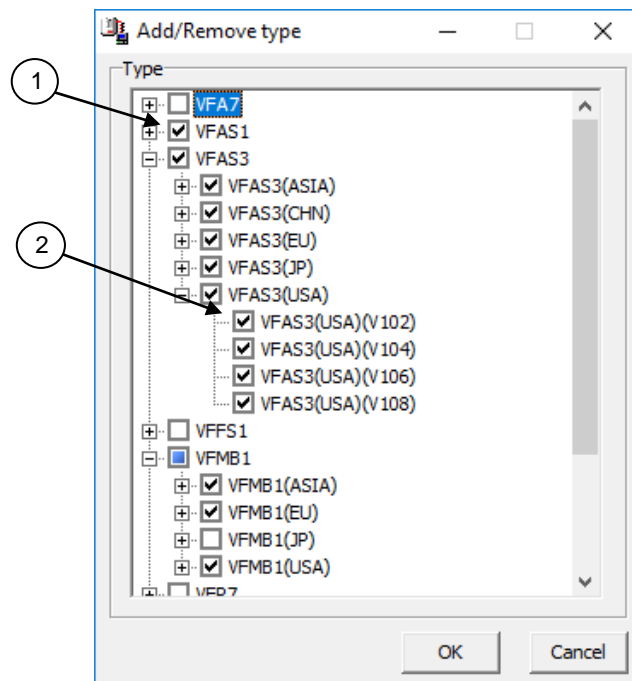


Figure 3-49 Add / Remove type screen

3.5.3. Maintenance mode

The maintenance mode is a service support-specific mode that allows for the display and editing of parameter regions related to inverter control.



Users are not allowed to change setting values other than user parameter regions. This may cause accidents or damages to the inverter or the motor.

3.5.4. Related PC tool (PCL00xZ, PCT00xZ)

Related PC tools (My function Tool (PCL00xZ), Trace Tool (PCT00xZ)), that corresponds to selected model, are displayed.

In advance, download those PC tools from Toshiba Inverter website or contact your Toshiba distributor, and save to the local disc drive. When select PC tool on the PCM002Z menu, the default folder (PCM002Z installed folder) is displayed. So select the downloaded PC tool in the local disk drive. The file locations are saved, so next time PC tools folder is opened.

Also select *PCL File Open*, then the saved PCL parameter files can be loaded into the current opened parameter table. But the PCL parameter files has only using My function parameters. So before load the PCL parameter file, set My function parameters to be default setting value, then load the PCL parameter file. If not, the unintended remain My function parameter may cause that the inverter does not work properly.

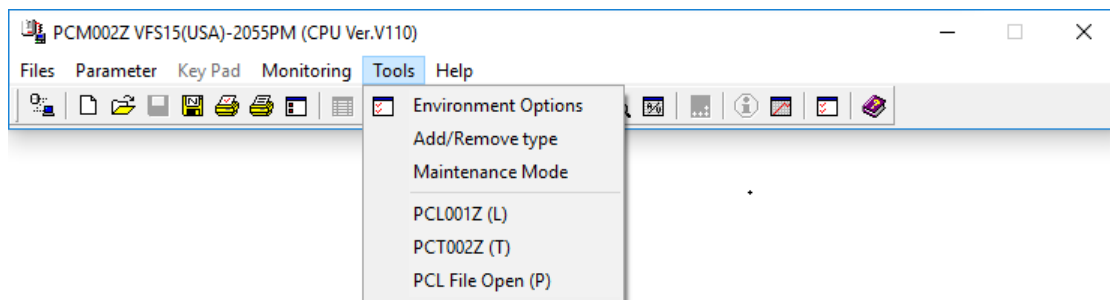


Figure 3-50 *Tools* screen

3.6. Help

3.6.1. Help

The PCM002Z online help file is opened.

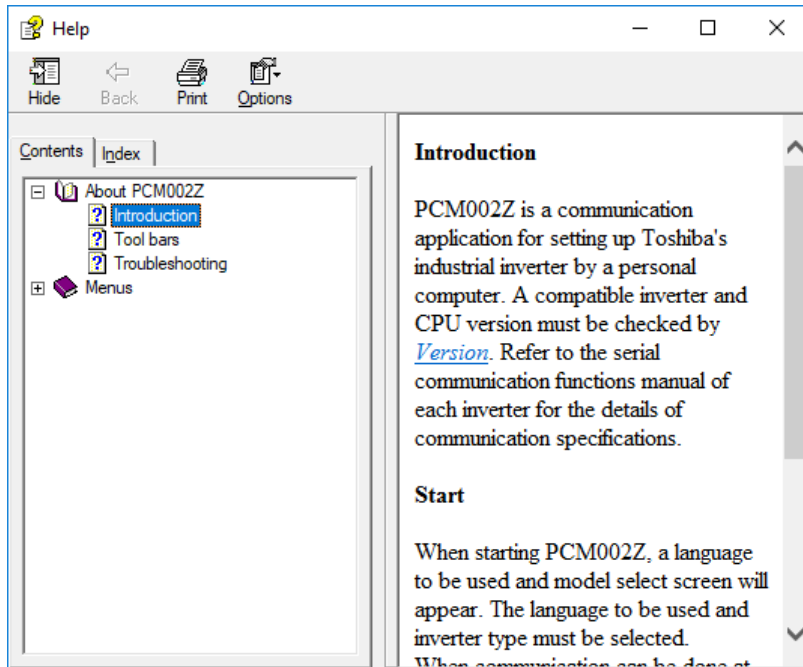


Figure 3-51 Help screen

3.6.2. About PCM002Z

The PCM002Z version number and corresponding inverters, and CPU versions are displayed.

* To add or delete selectable inverter series and CPU software version of the inverter, refer to “3.5.2 Add / Remove type” paragraph.

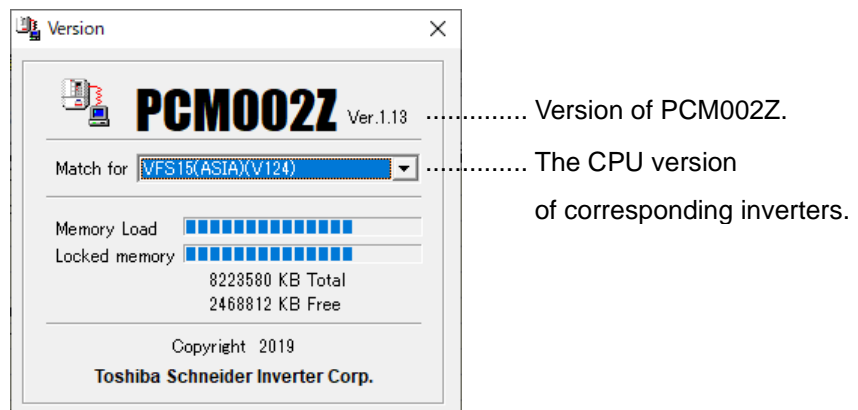


Figure 3-52 About PCM002Z screen

4. Standard specification

Items	Contents	Page
Support language* ¹	Japanese English	-
Input file	PCM002Z/ PCM001Z parameter data (*.pcm) PCS001Z parameter data (*.pcs) PCM001Z/PCS001Z parameter data (*.dat)	16
	PWU003Z parameter data (*.cfg) * ⁴ RKP010Z parameter data (*.cfg) * ⁵ PCM002Z/ PCM001Z monitor data (*.mon) PCL001Z/PCL002Z parameter data (*.pcl)	60
Output file	PCM002Z parameter data (*.pcm) PCM002Z parameter table data (*.csv) PWU003Z parameter data (*.cfg) * ⁴ RKP010Z parameter data (*.cfg) * ⁵	19
	PCM002Z monitor data (*.mon) PCM002Z monitor data (*.csv) PCM002Z monitor image (*.bmp, *.jpg, *.wmf)	40
Print function	Parameter table output Paper size / orientation, top, bottom, right and left margin setting Print item selection, Comment simultaneous print Excel® file format output Preview	23
Communication setting	Protocol : TOSHIBA / MODBUS-RTU Communication port : COM1-15 Baud rate: 1200 / 2400 / 4800 / 9600 / 19200 / 38400 / 57,600 / 115,200 bps Parity: None / Even number/ Odd number Broadcast, Inverter number support	24
Parameter communications	Parameter Import: User and maintenance parameter* ¹ Parameter Export: User and maintenance parameter* ¹ Parameter Comparison: User and maintenance parameter* ¹	28
Parameter table	User and maintenance parameter display* ² Undo / Redo Hexadecimal code / Decimal code display Import / Export/Comparison Default setting display Display changed parameters only Display specified parameters only Copy in a clipboard by the Microsoft® Excel® form Communication number/function name find	26
Key Pad function	UP / DOWN / MON / ENT / RUN / STOP key support 4-digit 7-segment LED display RUN / MON / PRG / VEC / ECN lamp display, Key lamp display Operation frequency command value input setting function	39

Items	Contents	Page
Monitoring function	The number of monitors: Maximum 10 Time axis adjusting range: 0.5 – 30 s / div* ³ Sampling rate: 100 – 5000 ms Number of sampling: 1250 - 10000 Display magnification, Offset adjustment (Real time) Automatic scroll function Automatic roll back at completion function Trigger function, pre-trigger function Long-time recording (24 hours max.) function Monitoring value unit change (A/V) function Zoom function, Data display function Inverter alarm/trip display function All monitor item value display on trip function Print function Graph color, back color setting function Inverter information display function	40
Others	Tool bar, On-line help, Version information, Parameter help	-

*1 Switched by *Environment Options* option.

*2 Maintenance parameter display is executed only in the maintenance mode.

*3 Differs from the number of channels to be read.

*4 Only the inverter that PWU003Z corresponds.

*5 Only the inverter that RKP010Z corresponds.

5. Using example

An example using PCM002Z is introduced.

5.1. Parameter back-up operation

It is recommendable that the parameter setting of the inverter currently used be saved for regular maintenance and failures.

[Procedure]

- (1) Start PCM002Z and select the inverter used.
- (2) From *Tools | Environment Options*, clear a check from the “**Export ‘Change’ Parameters only**” and make “**Use Maintenance Mode**” to be checked. (There is a note "This is a maintenance function for our service man. Please do not check", but it can be used only for back-up operation.)
- (3) Select *Parameter | Parameter Import*, and import the setting value specified in the inverter into the computer. “**Communication error**” may be displayed while reading from the inverter. Press the [OK] button and continue import.
* If errors occur frequently, other causes can be considered. Refer to Troubleshooting of *Help*.
- (4) Select *File | Save As*, and save the parameters import in the computer.
- (5) From *Tools | Environment Options*, clear a check from the “**Use Maintenance Mode**”.

The parameter setting of the inverter will be saved with the above.

5.2. Inverter / Control board replacement operation

When an inverter or a control board is replaced, follow the procedure below, and write the parameter previously saved to the inverter. It is necessary to initialize a inverter format following the procedure (5) after writing.

[Procedure]

- (1) Select the inverter connected.
- (2) From *Tools | Environment Options*, clear a check from “**Export ‘Change’ Parameters only**” and make “**Export to EEPROM**” and “**Use Maintenance Mode**” to be checked.
- (3) Select *File | Open* and specify any file.
 - * The open file can be checked in the parameter table.
- (4) Select *Parameter | Parameter Export*, and export setting value from the computer to the inverter.
 - “**Communication error**” may be displayed while writing. Press the [OK] button and continue export.
 - * If errors occur frequently, other causes can be considered. Refer to Troubleshooting of *Help*.



Caution

If parameters are written in the different drive from the drive selected at PCM002Z startup, there is possibility of incidents which may cause damage to inverters or motors.

- (5) From the parameter table, enter “6” in “**Set Val.**” for the parameter “**Standard setting mode selection (L Y P)**”, then press the Enter key. Next, press the F2 key, then the inverter is automatically initialized.
 - * After the initialization, the parameters written are valid. Communications cannot be accepted while the inverter is being initialized.

Parameter setting for the inverter is complete with the above after a inverter unit or a control board has been replaced.